

APP USER GUIDE

MOVON SnowMate 1.0Hp (V Series)

MOVON SnowMate 1.5Hp (V Series)

Version 2025.06.001

INDEX

No.	Topic	Page
1	Download App	1 - 4
2	Register & Login	5 - 10
3	My Profile	11 - 13
4	Add Device	14 - 22
5	Things You Can Do With the App	23 - 27
6	Self-Clean	28 - 31
7	Timer	32 - 37
8	Human Presence Control (Beta)	38 - 41
9	Intelligent Scene	42 - 48
10	Room Management	49 - 53
11	Firmware Update	54 - 56
12	Others	57 - 59
13	Reset Wifi & Reconnect	60 - 62

1. Download App



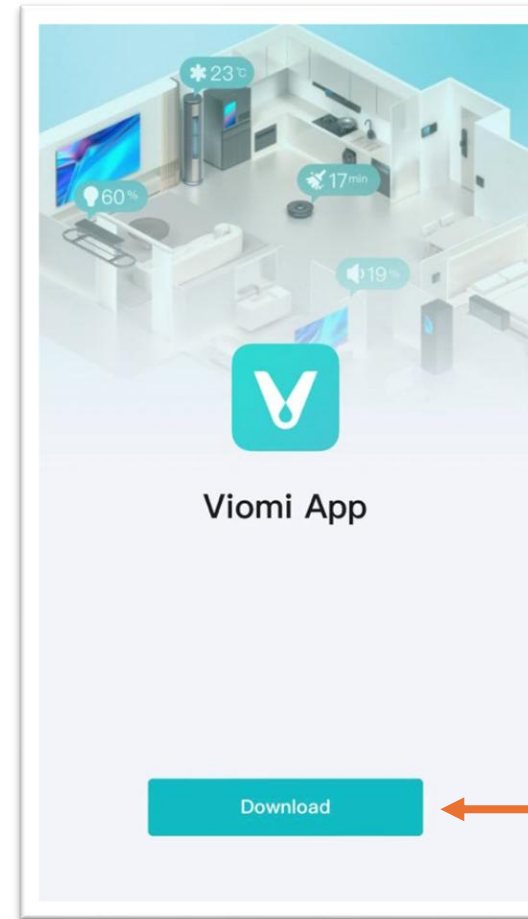
1. Scan QR Code



Supported:



2. Download Viomi App

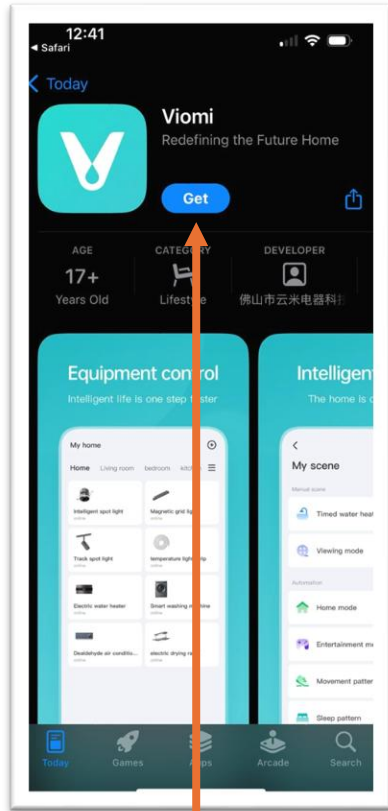


Click to download.

UI may vary or different by phone brands, model, OS version and App marketplace.

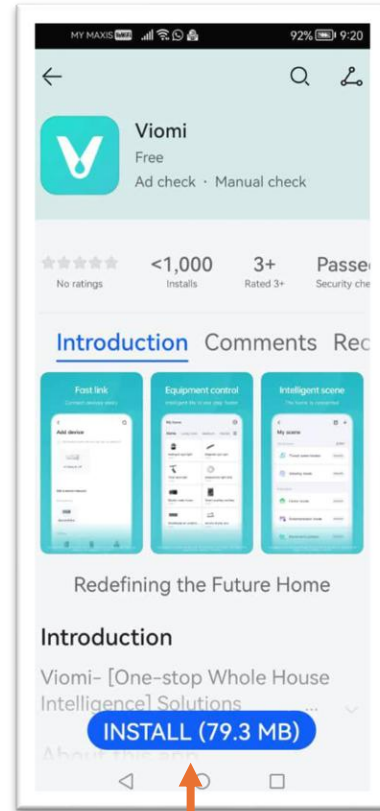


Apple iPhone



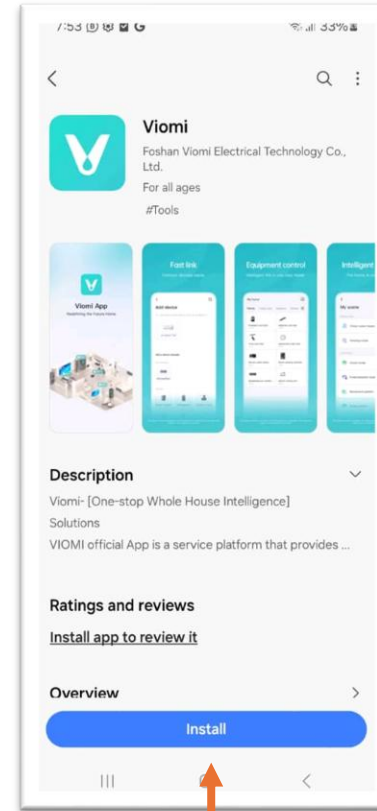
Download & install.

Huawei Phone



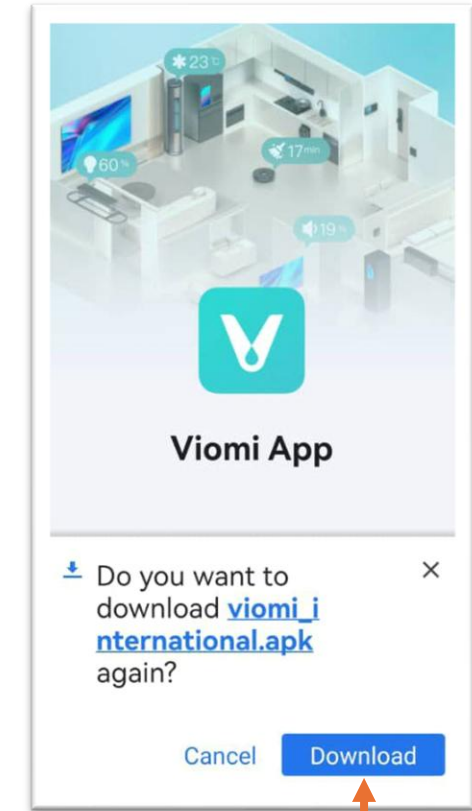
Download & install.

* Samsung Phone



Download & install.

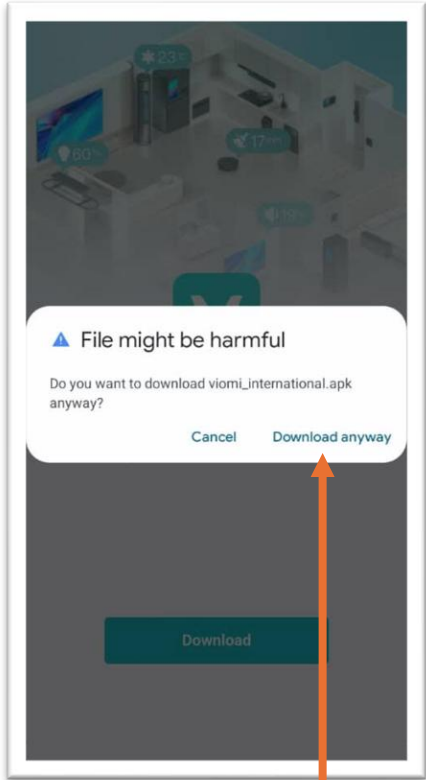
* Other Android Phone



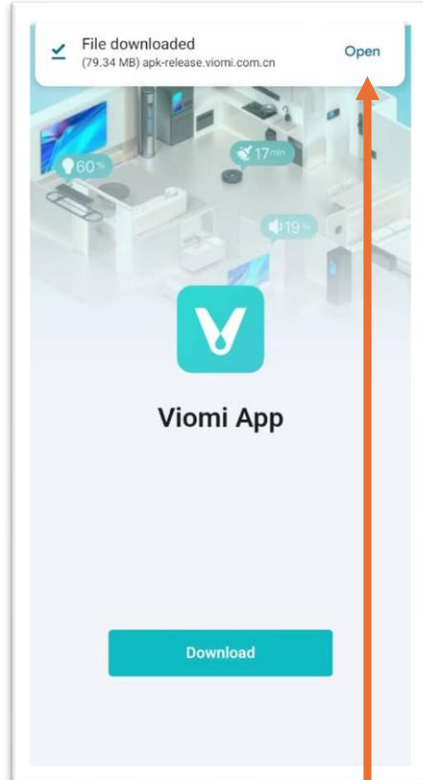
Download APK.

UI may vary or different by phone brands, model, OS version and App marketplace.

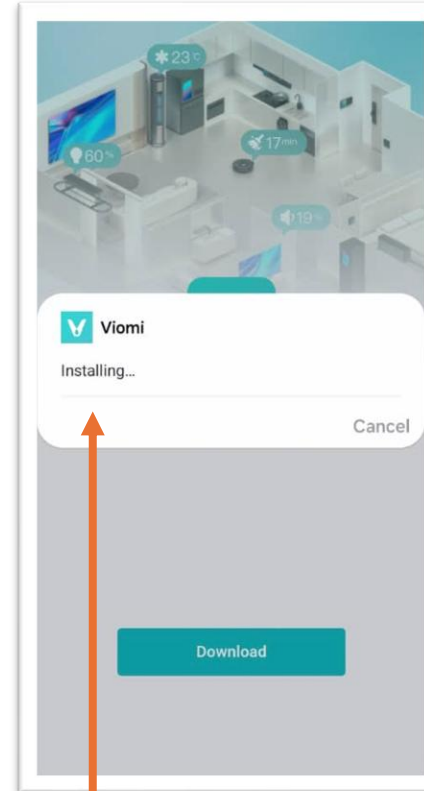
If you're download APK...



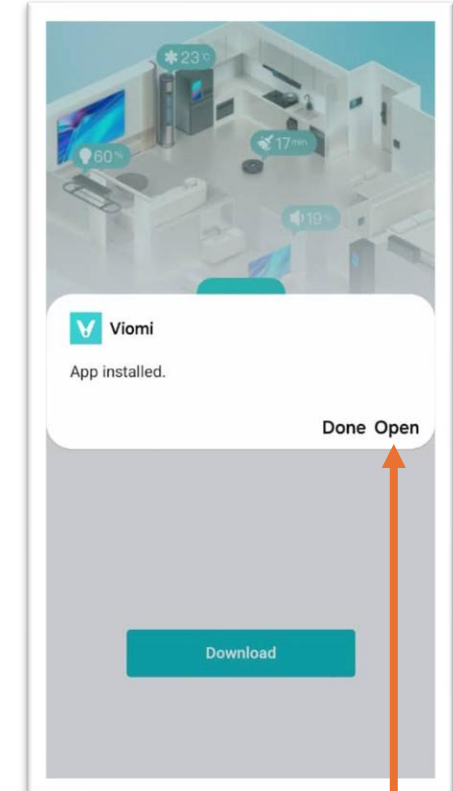
Click to download if your phone prompt alert message.



Open APK after download.



Wait for installing.

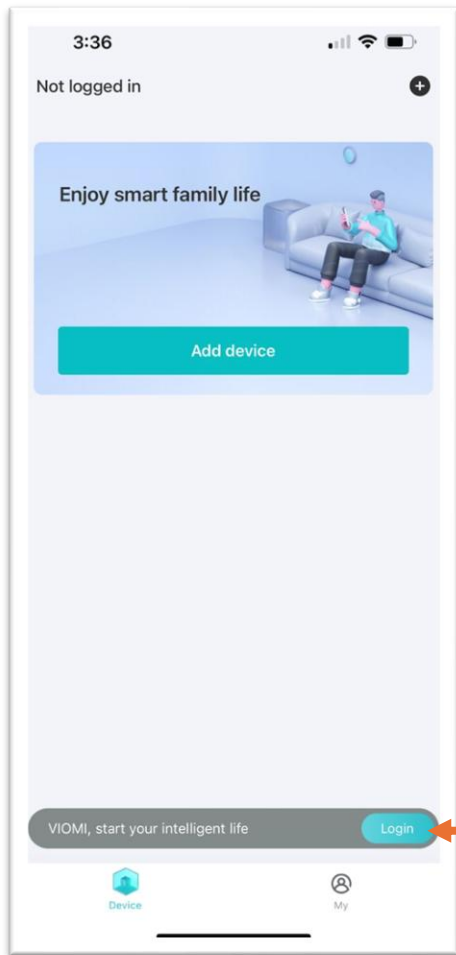


Installed complete & start use.

2. Register & Login

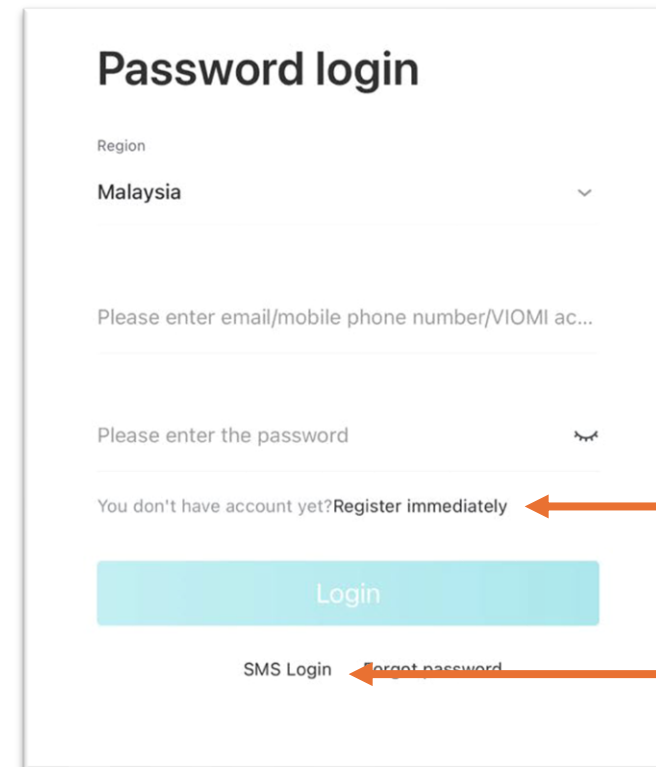


1. Register or login



Click to login or register account.

2. Register by email or login by phone number



Register by email.

Login by phone number.

By email

Register VIOMI account

Region
Malaysia

Please enter your email address

Please enter the password

Please enter your password again

6-20characters,combining at least 2 of the following:digits,letters,and special symbols(except space).

Next

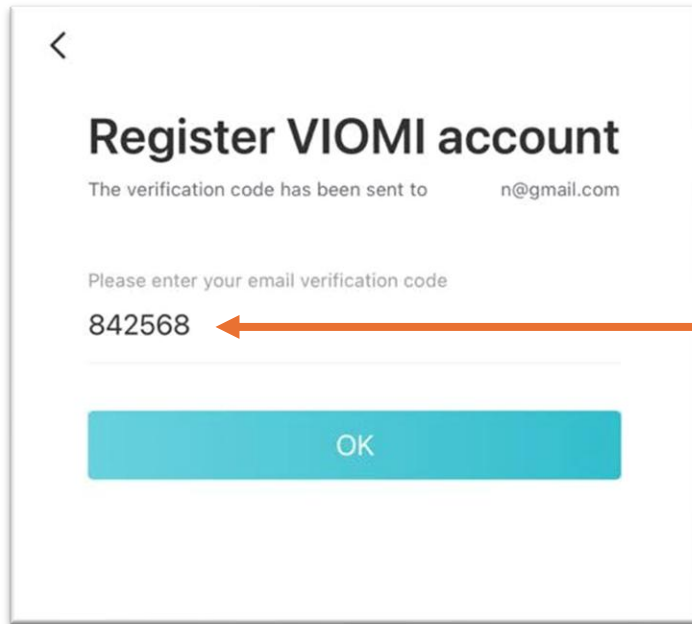
← Key-in your email.

← Key-in your password.

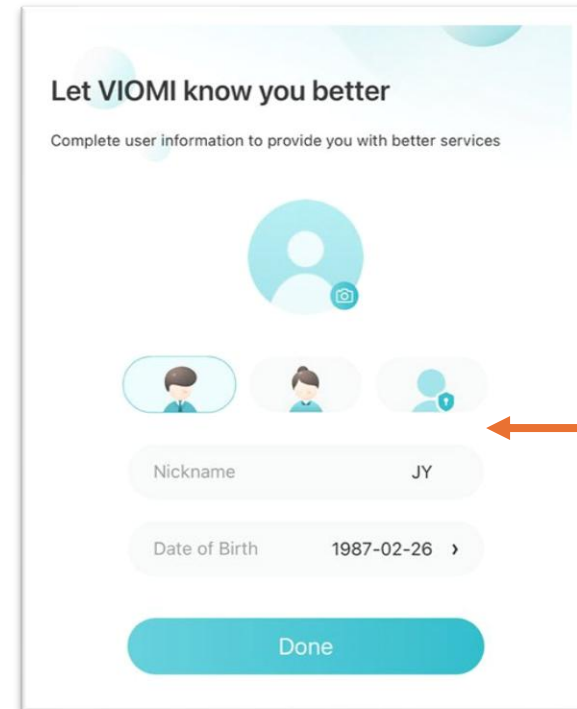
Read and agree "VIOMI User Agreement" and "Privacy agreement"
Your personal information will be stored according to laws and regulations your chosen country/region

↑ Tick to agreement T&C at bottom of page.

By email



Key-in verification code received in email.



Done & complete your information. (Can skip)

By phone number



SMS Login

Mobile phone number

+60

Key-in your phone number.

Please enter the verification code

Send

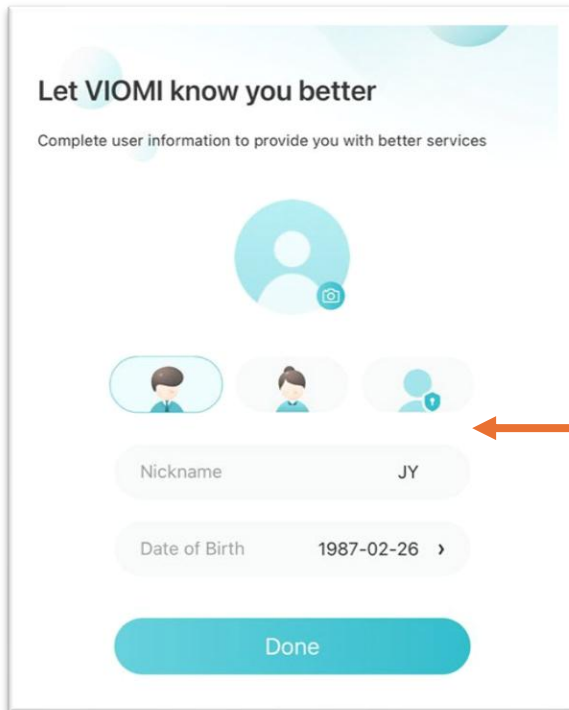
Click to get verification code.

Login

Password login

Key-in verification code received from SMS.

By phone number

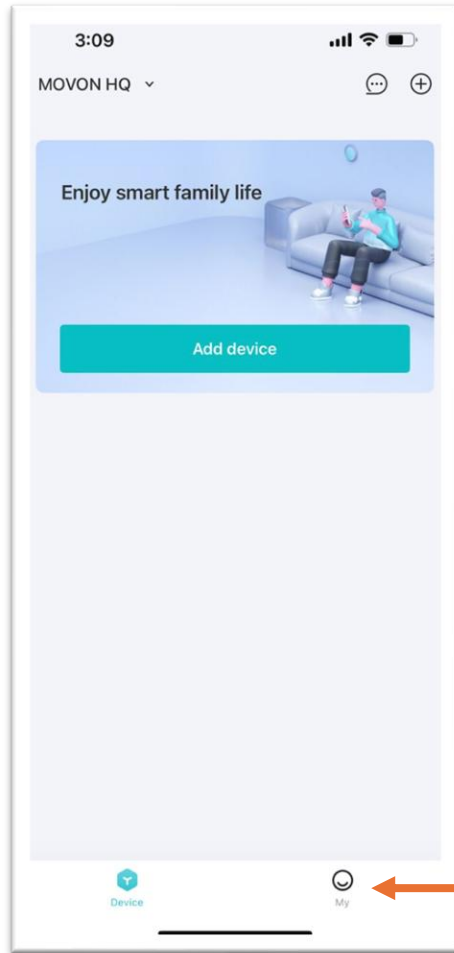


Done & complete your information. (Can skip)

3. My Profile

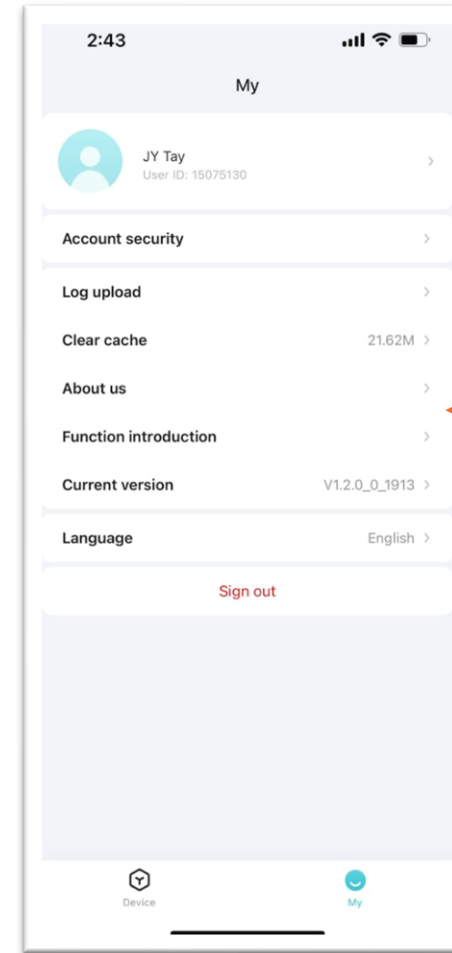


1. Go to profile.



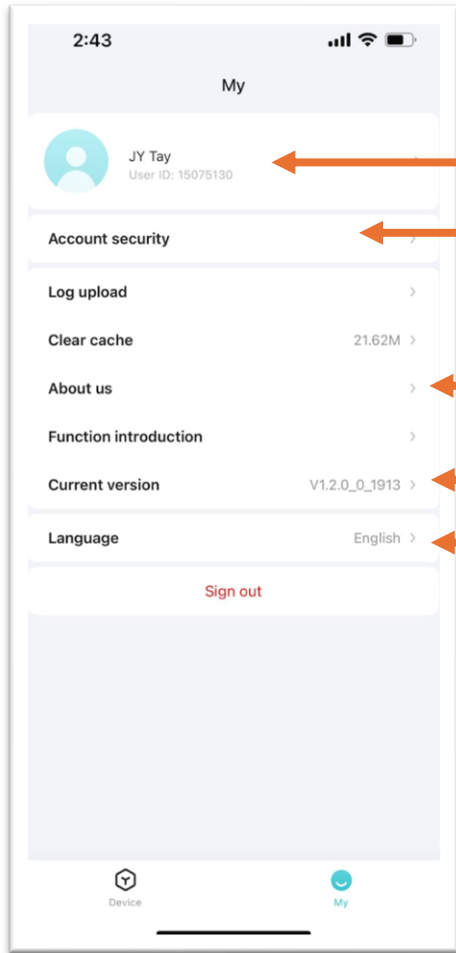
Click to profile.

2. Choose your action.



Choose the action you want to do or the information you want to see.

Change region is not recommended. It may affect the function and feature in your app.



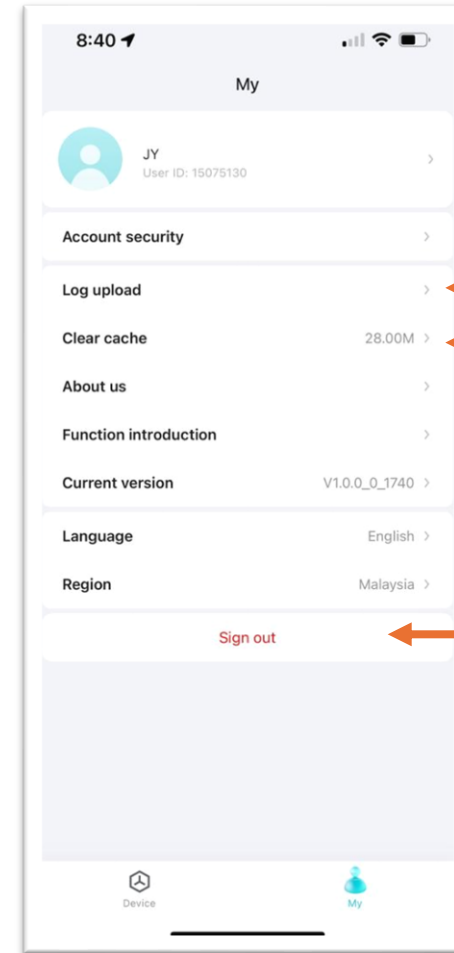
Your nickname and user ID.

To bind your email/mobile number or change login password.

View the T&C.

App current version.

Change language.



(Not necessary to do)

Upload your log of use of app to VIOMI cloud server.

Clear cache.

To sign out.

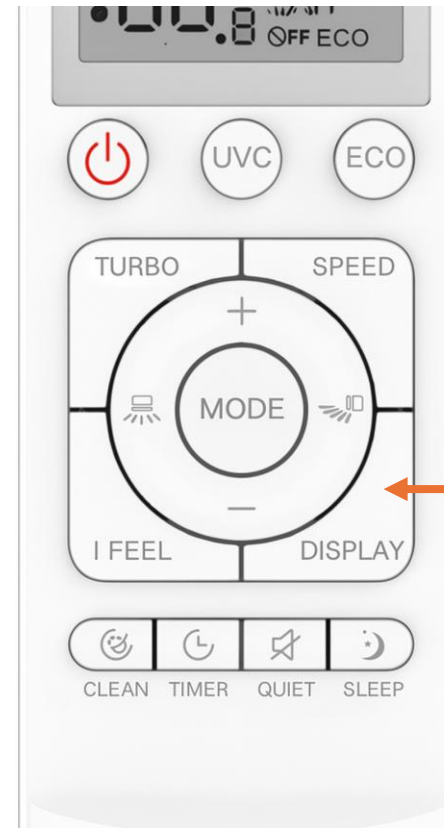
4. Add Device



1. Turn-on your device.



2. Turn on device wifi from remote control.



Continuous press **6-times** on [Display] button to turn on the wifi.

3. Ensure the device wifi is on.



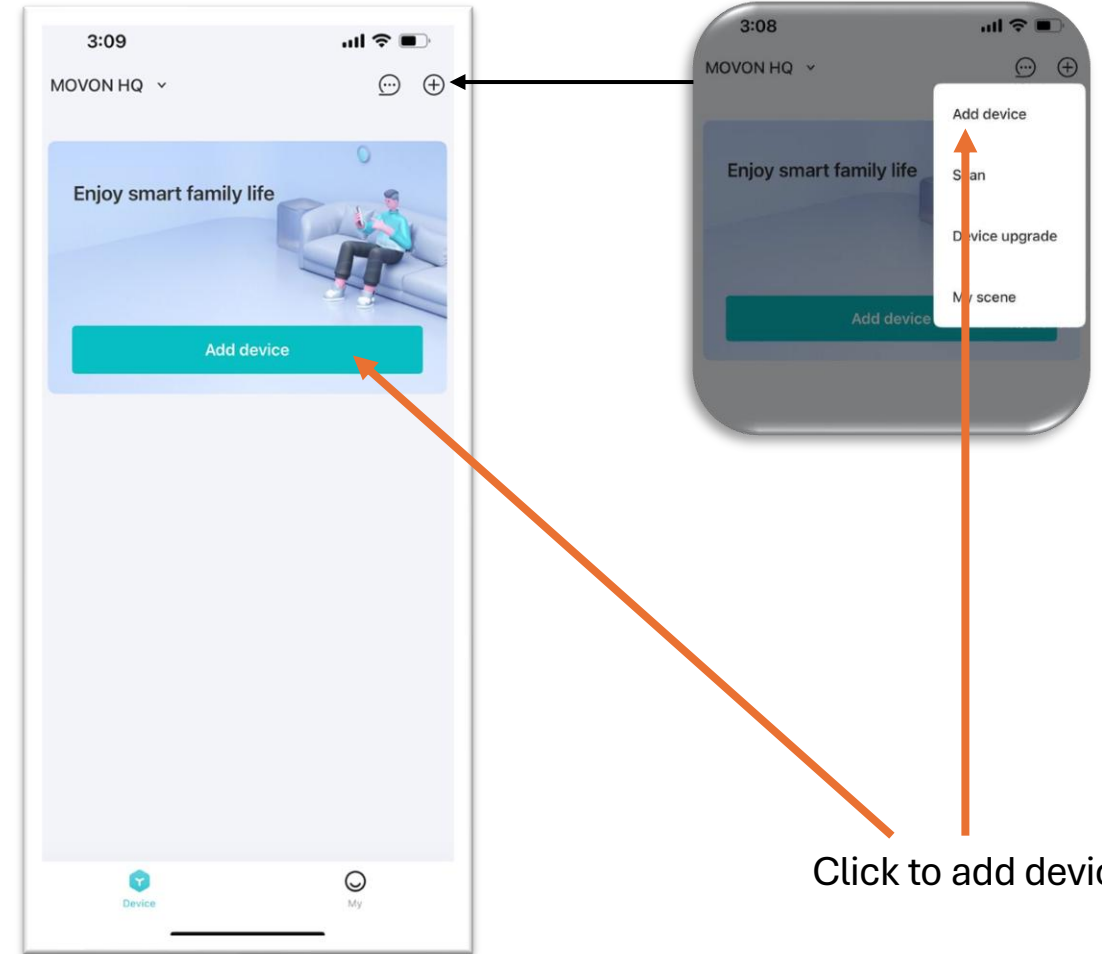
* After you press 6-times on [Display] from remote control:

- i. You will hear the beep-beep sound ringing.
- ii. You will see the wifi icon is blinking on the device's embedded round screen display.

4. Connect your phone to your internet wifi.

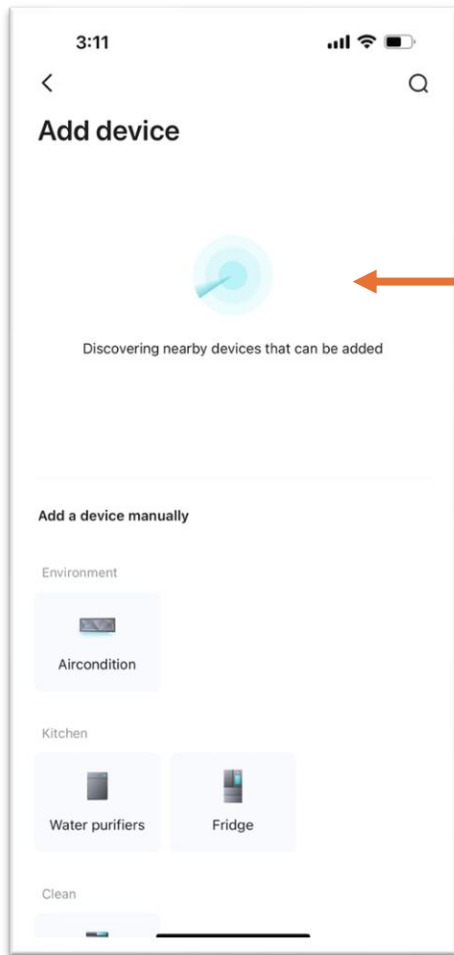


5. Open app & add device



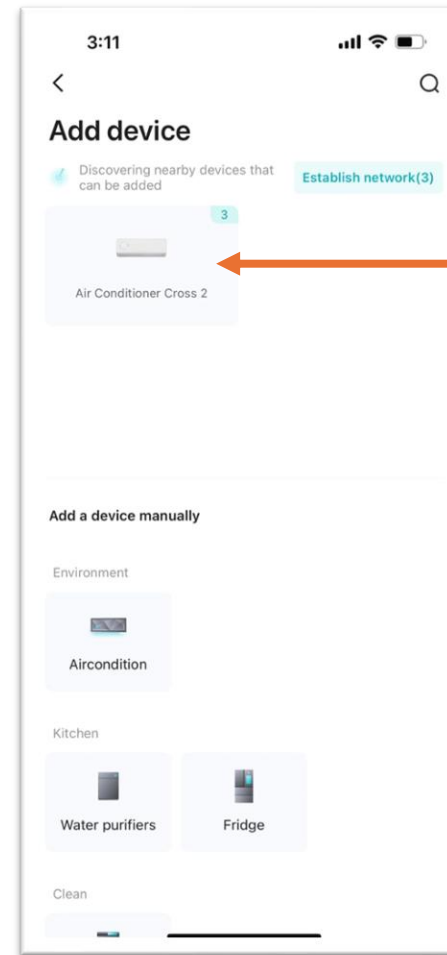
Click to add device.

6. Search nearby device.



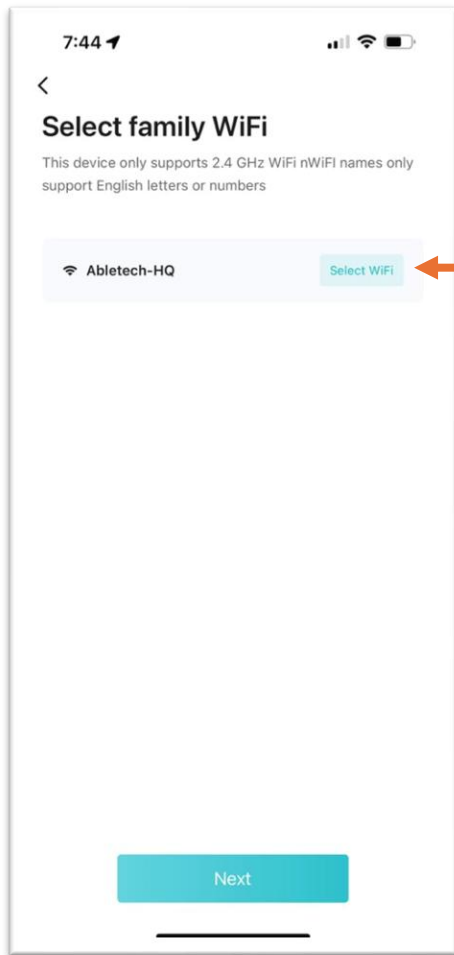
← Wait for device detection.

7. Select device.



← Click to select the device you want to connect.

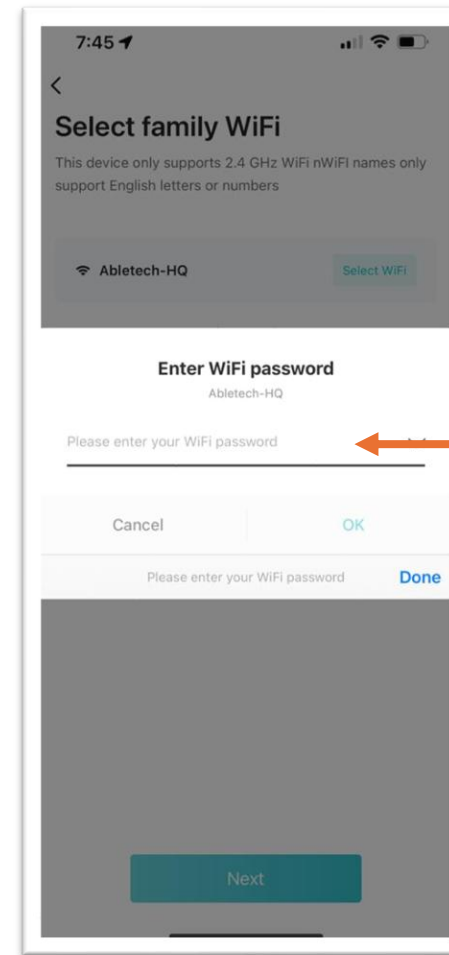
8. Select your wifi.



Select & confirm the wifi you want the device to connect to.

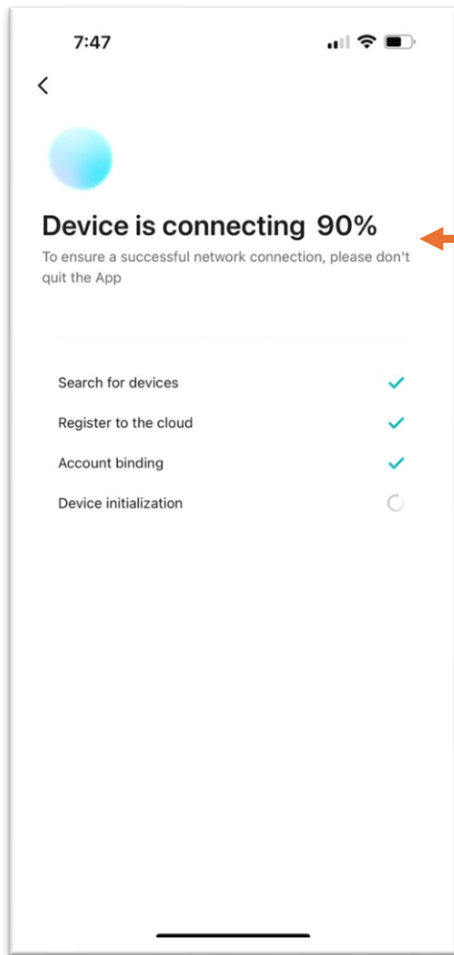
(Same to your mobile phone connected wifi)

9. Key-in wifi password.



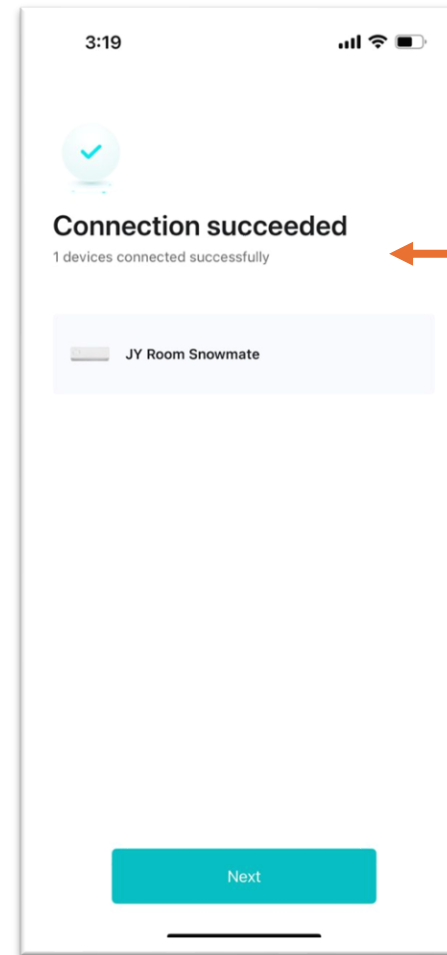
Key-in your wifi password.

10. Device connecting.



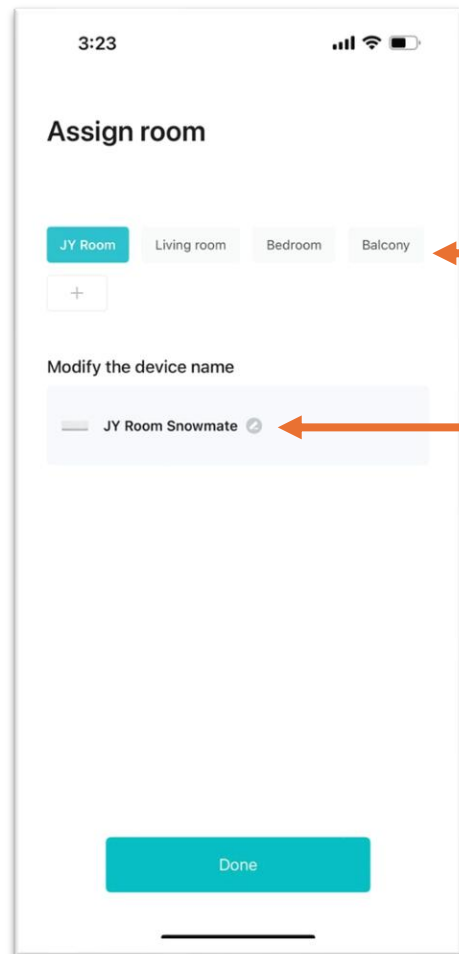
Wait for device connecting completely.

11. Device connected.



Show you the device is successfully connected.

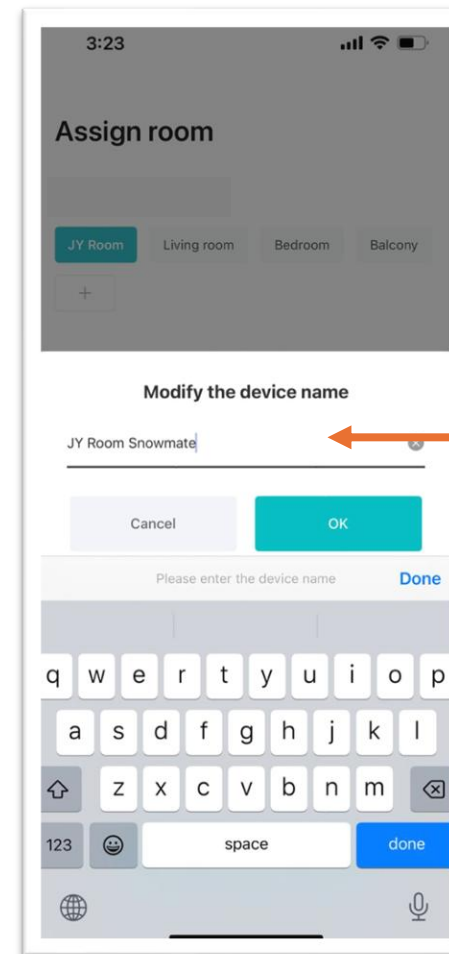
12. Assign room & device name.



You may assign where your device located.

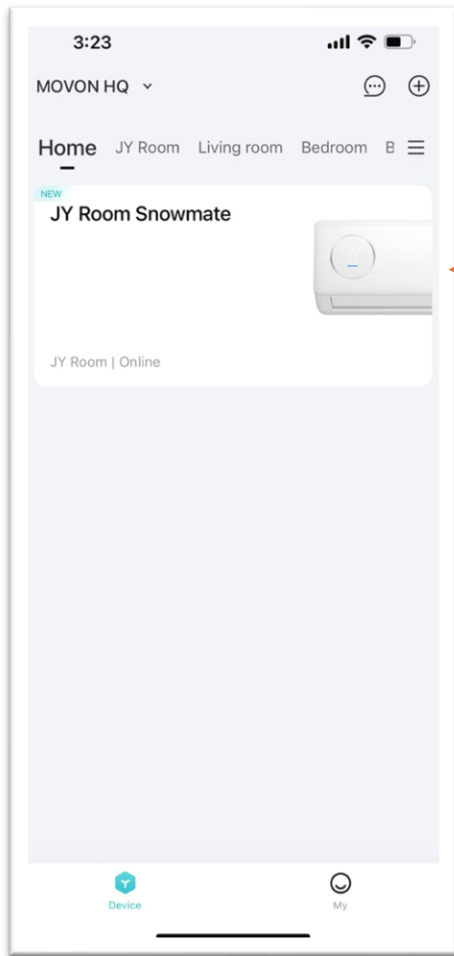
Click to rename your device if you want.

13. Rename device.



Rename your device if you want.

14. Done!



Device successfully added into your app & you can start to use.

5. Things you can do with the app

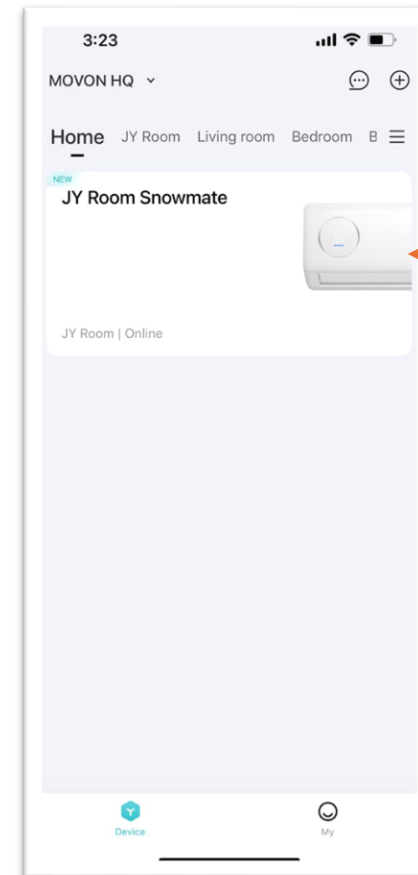


To control your device with the app, you must:

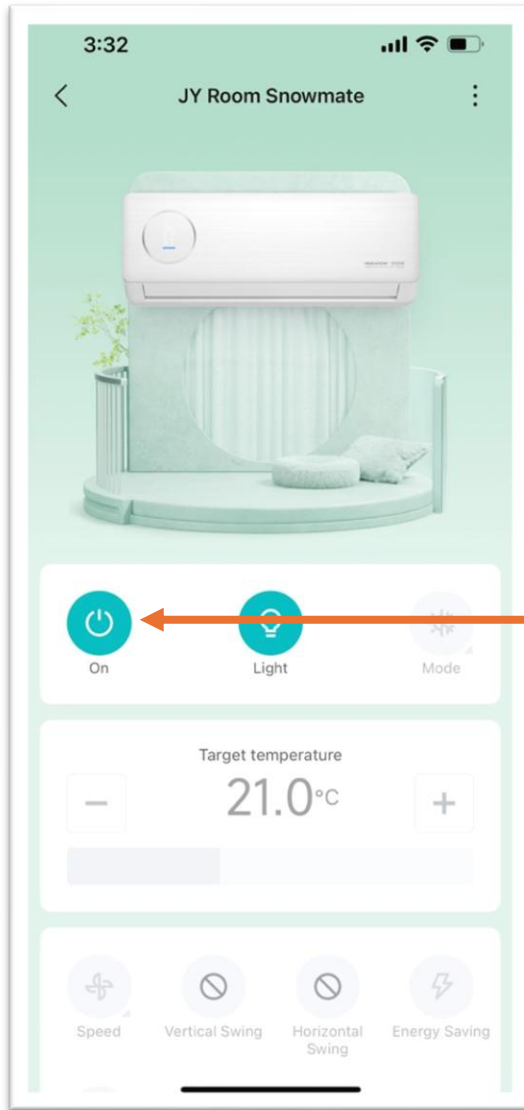
a. Ensure the device is connected to internet wifi.



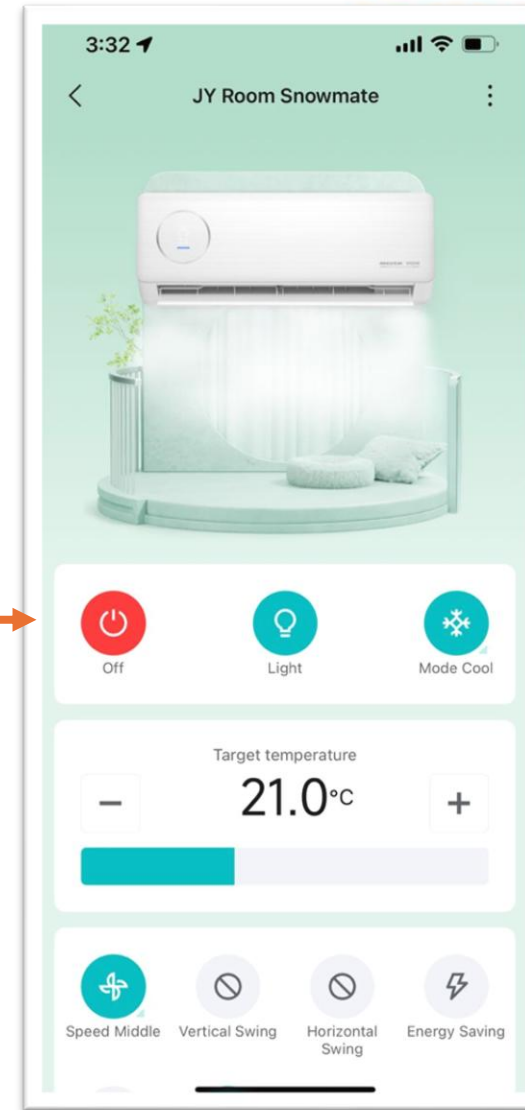
b. Choose the correct device to control.



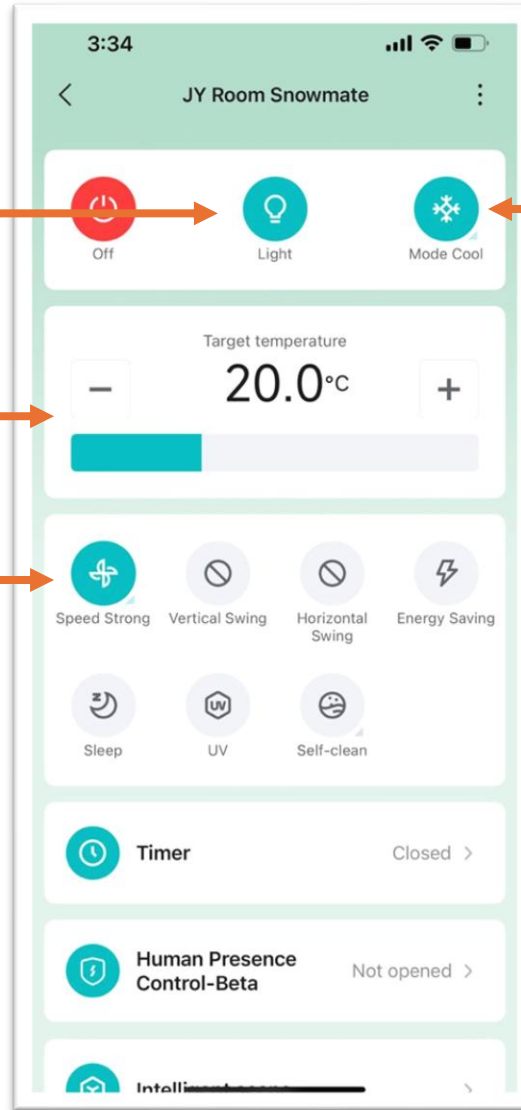
Click & choose the device.



Turn ON/OFF to
the device



Turn ON/OFF the light and display of the device.



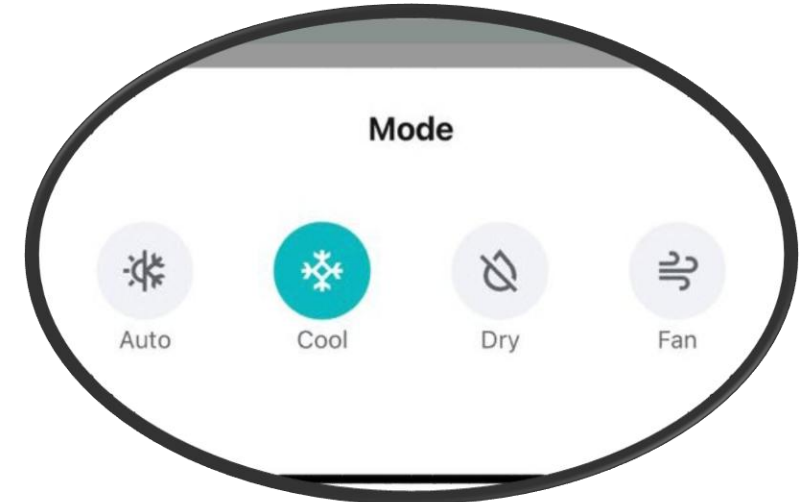
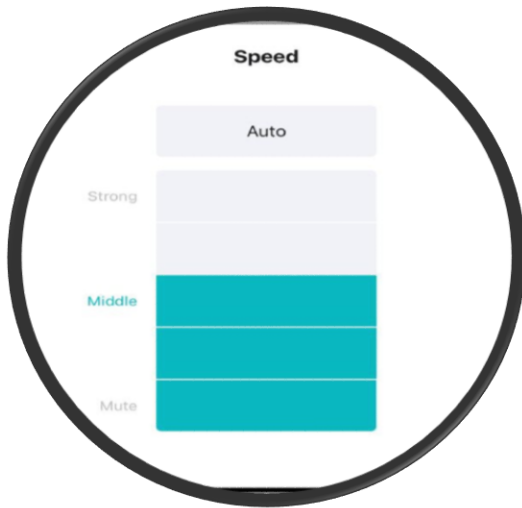
Change device mode.



Adjust temperature.

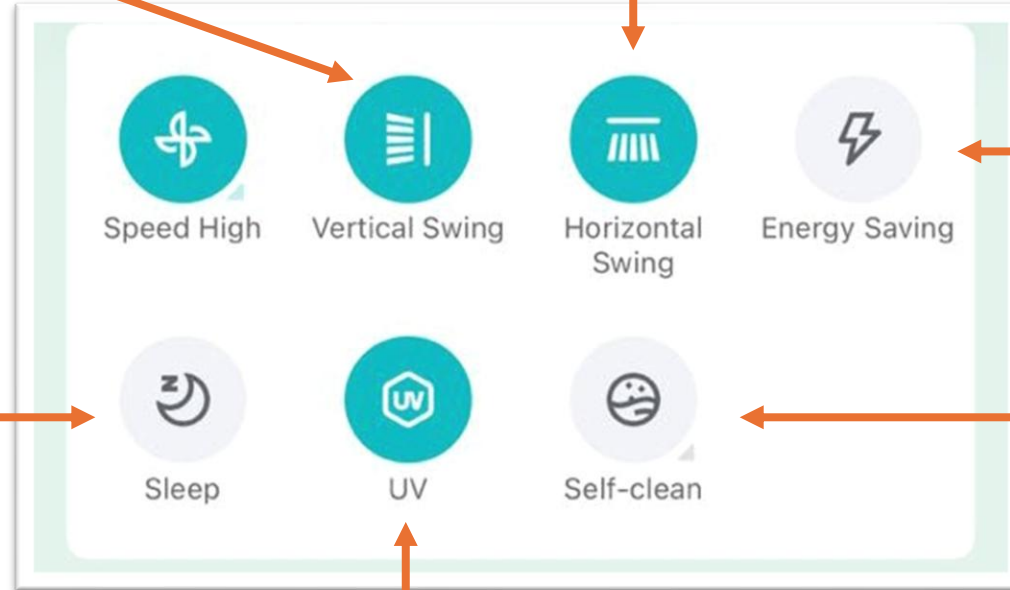


Adjust fan speed.



Turn ON/OFF for the vertical swing.

Turn ON/OFF for the horizontal swing.



Turn ON/OFF for the energy saving mode.

Turn ON/OFF for the sleep mode.

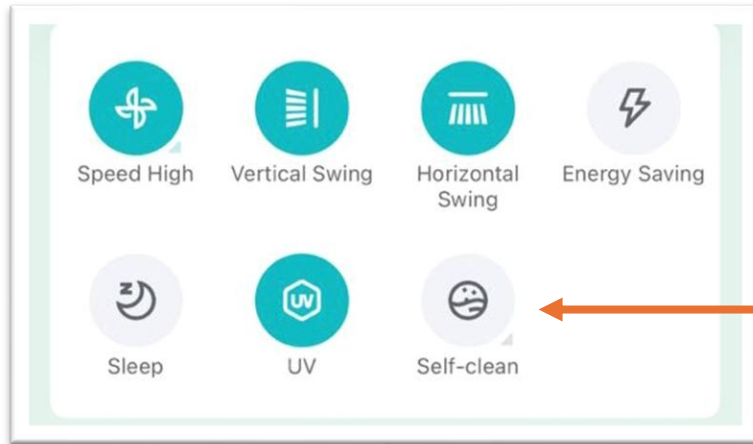
Turn start [Self-Clean] function.

Turn ON/OFF for the UV.

6. Self-Clean

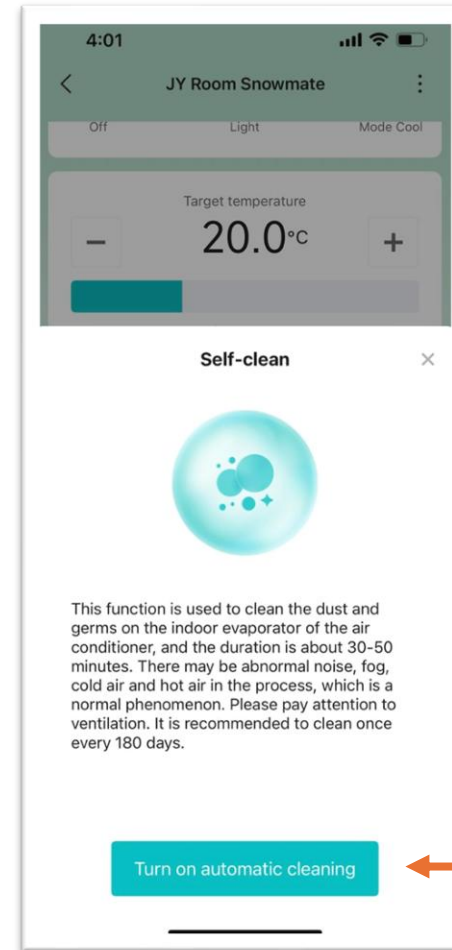


1. Choose [Self-Clean].



Press on [Self-Clean] button.

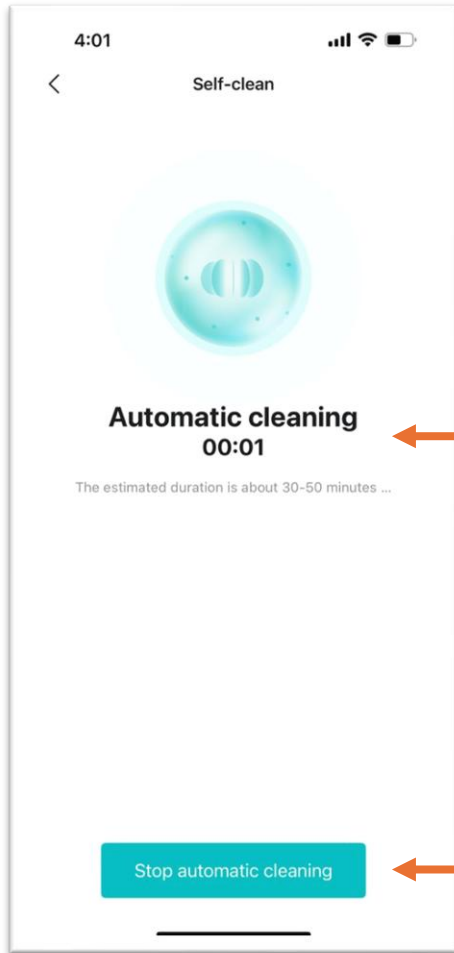
2. Confirm start self-clean.



Click to confirm start self-clean.

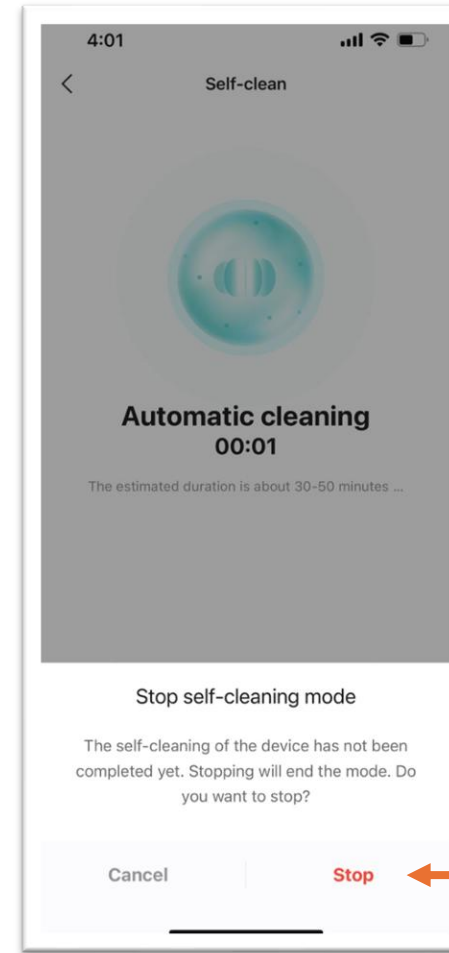
The setting selection may vary or different by selected mode.

3. Self-clean in progress.



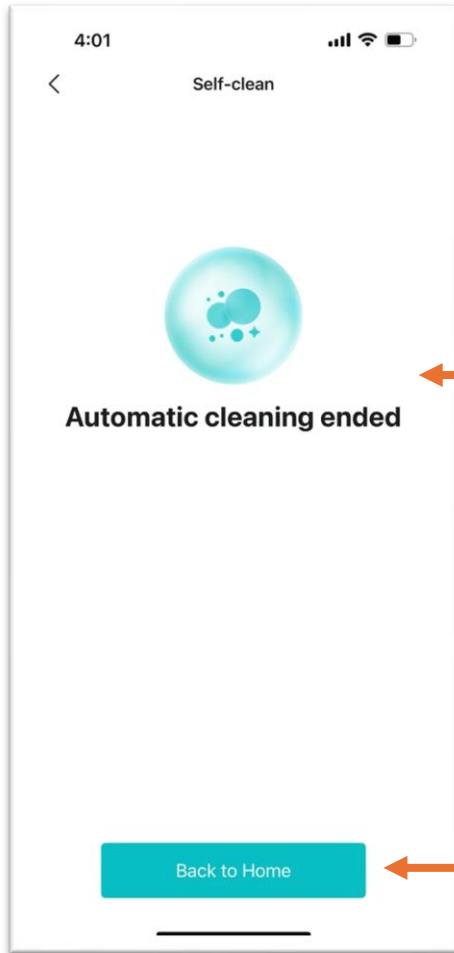
← Showing the running time in minute and hour.

← Press if you want to stop self-clean.



← Confirm to stop the self-clean.

4. Self-clean ended.



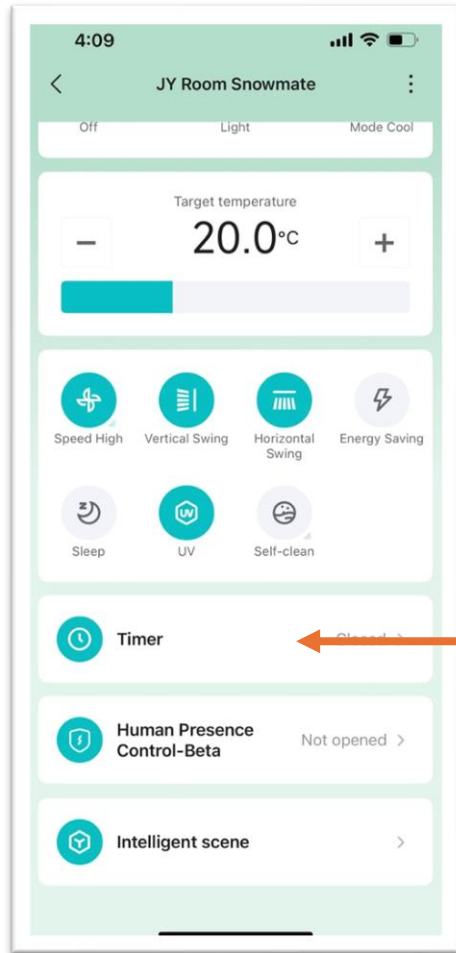
Showing the self-clean is stopped and ended.

Click to back to home page.

7. Timer

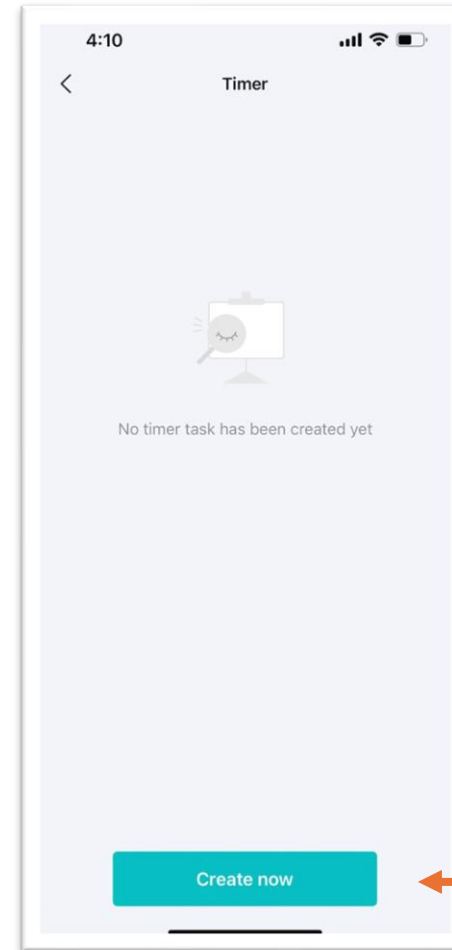


1. Choose [Timer].



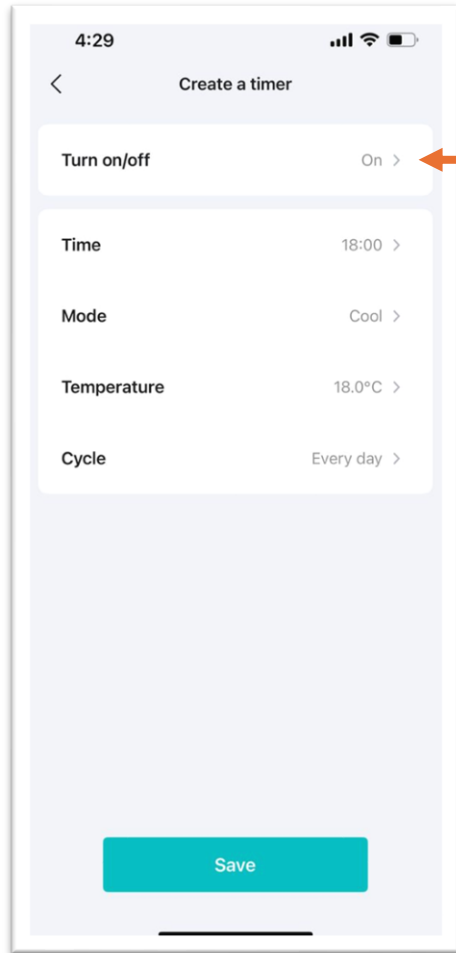
Press on [Timer]

2. Create new timer setting.

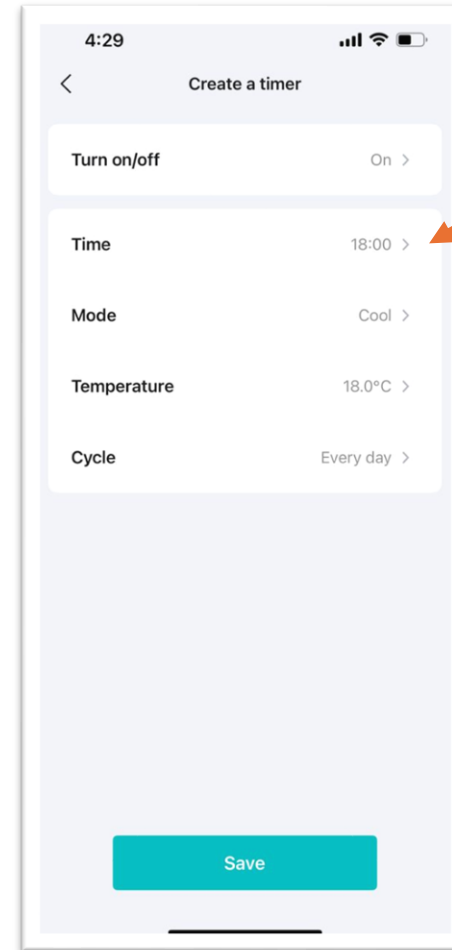
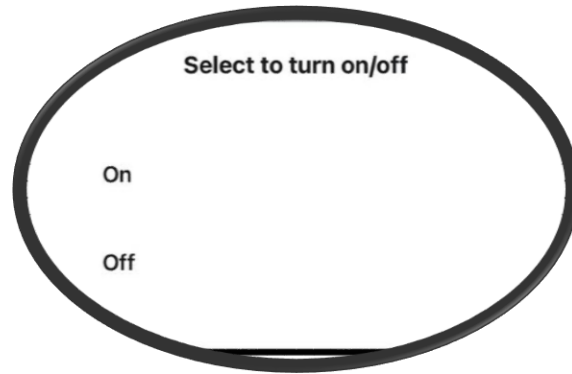


Press on [Create Now]

3. Set your timer command.

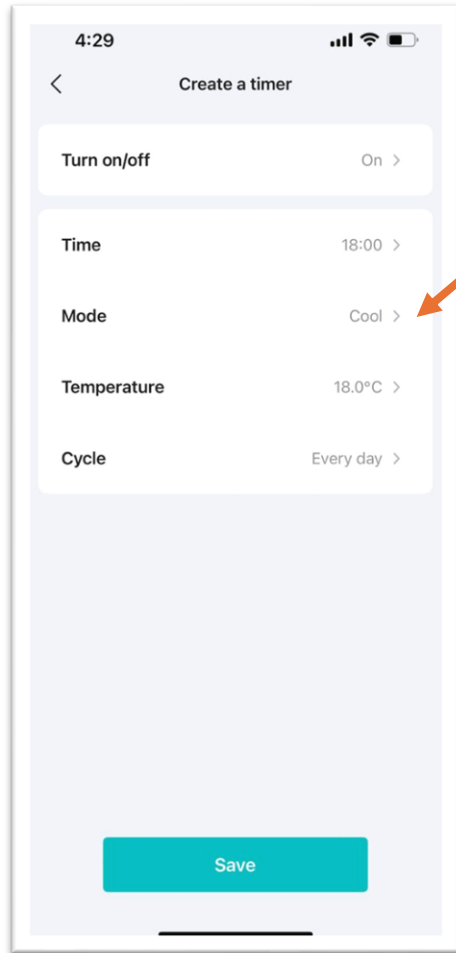


Set the command is to turn on or turn off.

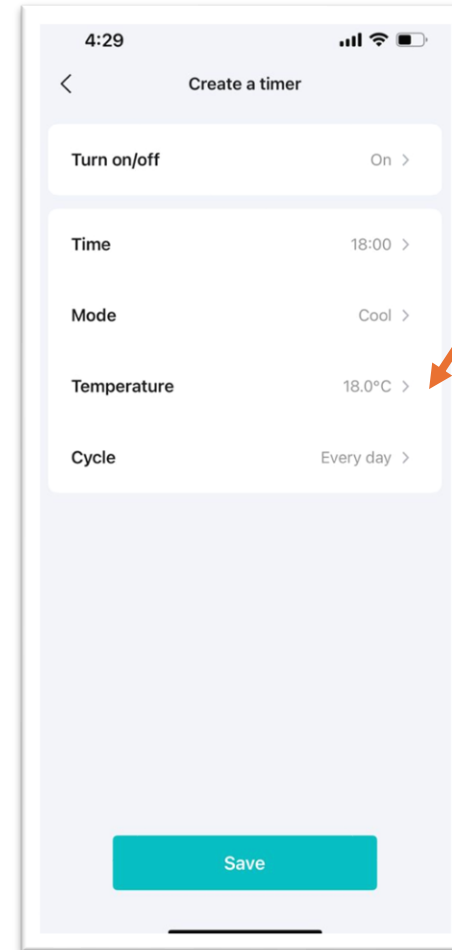
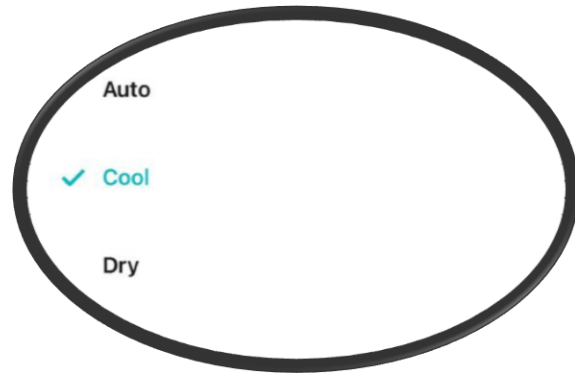


Set the time you want the timer and command start.



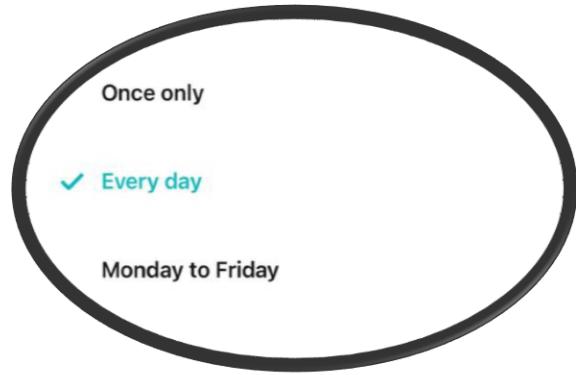
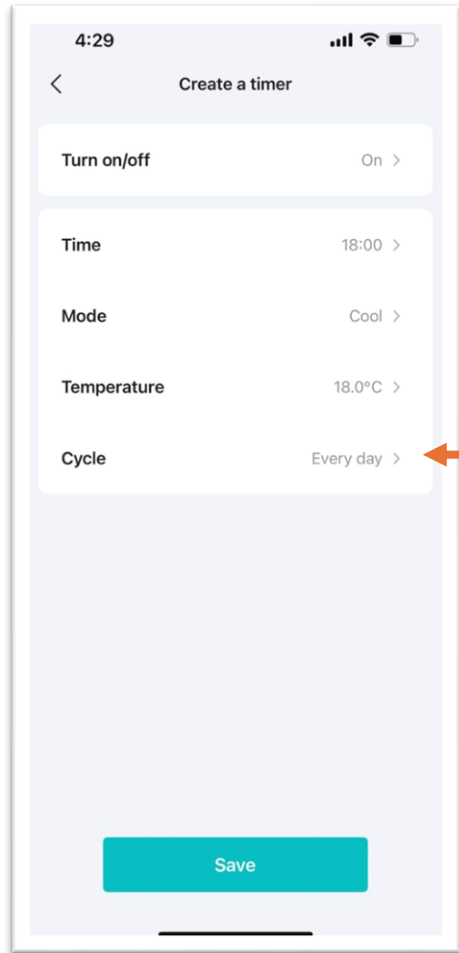


(If turn on)
To set the mode when
turn-on.

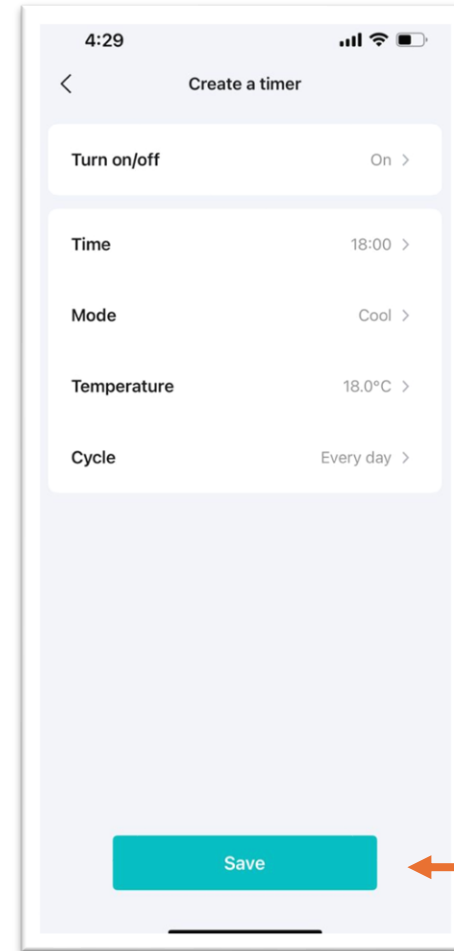


(If turn on)
To set the turn-on's initial
temperate.



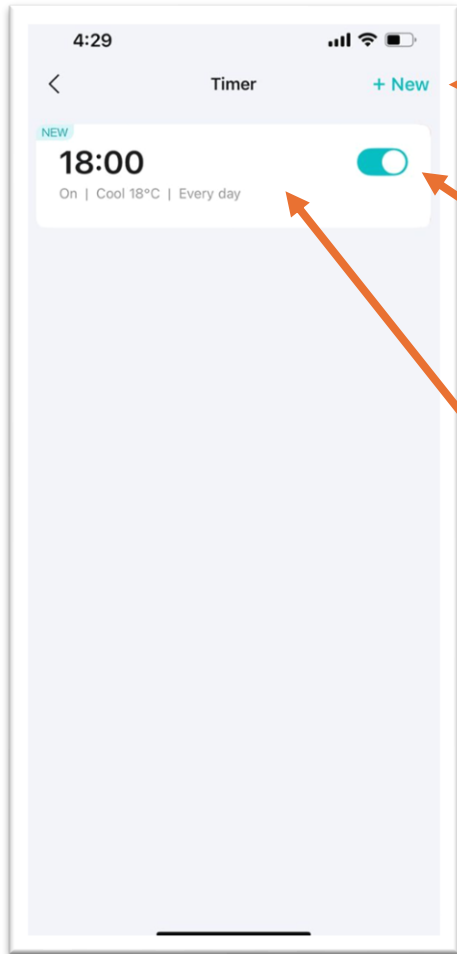


Set the cycle day you want the timer and command start.



Save the timer setting.

4. New timer saved.

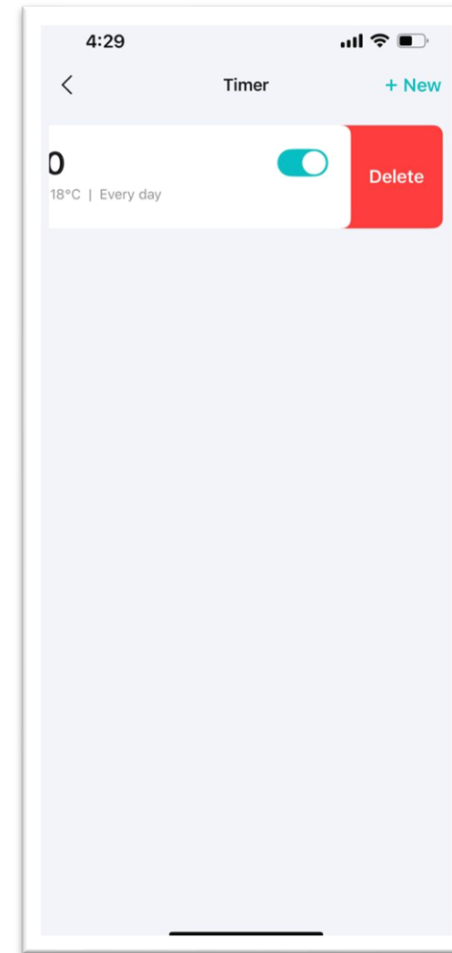


Click if you want to create additional new timer.

Press on this toggle if you want to enable/disable the timer.

Click to view/edit the timer setting you have created.

5. Delete timer.

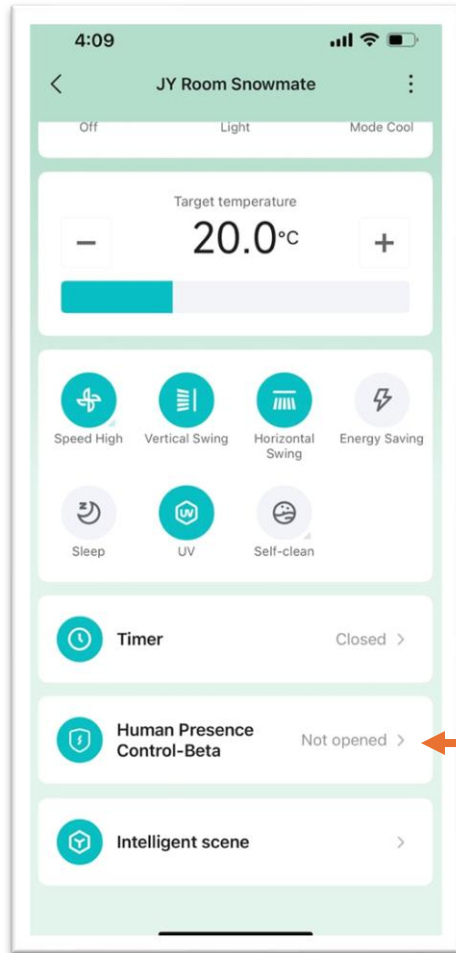


Slide to the left and click [Delete] if you want to delete the timer.

8. Human Presence Control (Beta)

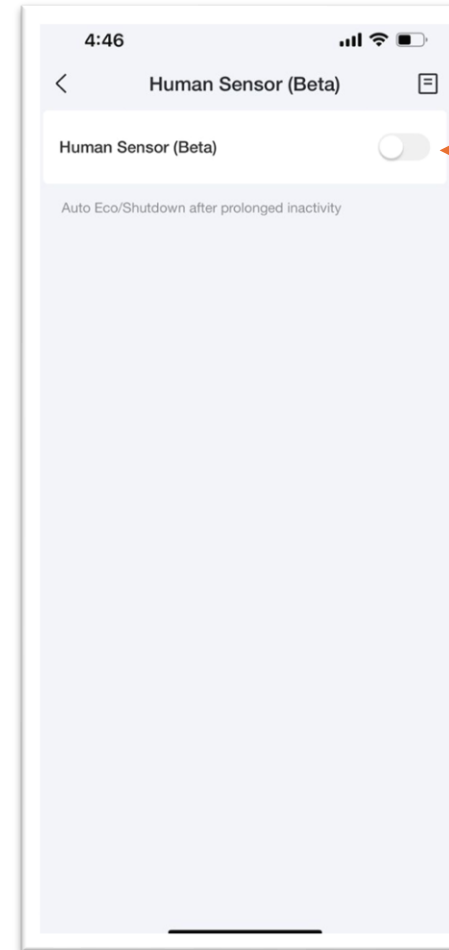


1. Choose [Human Presence Control].



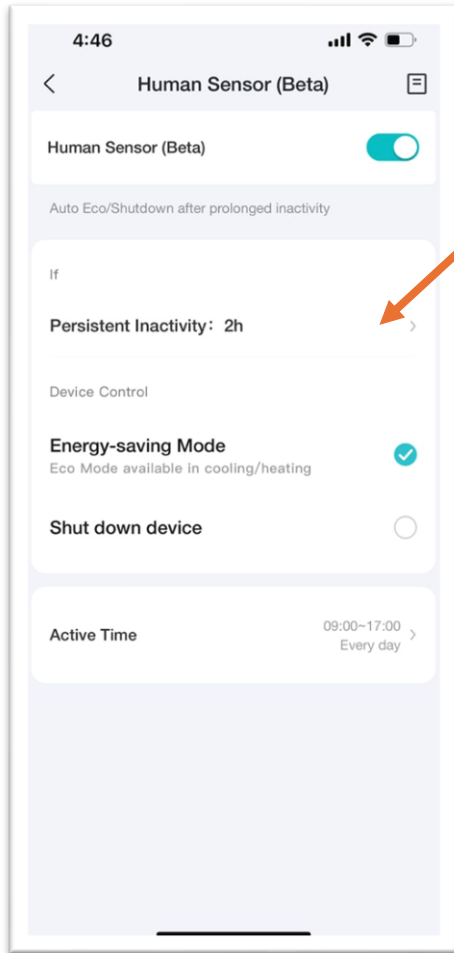
Press on [Human Presence Control] button.

2. Turn on the sensor.

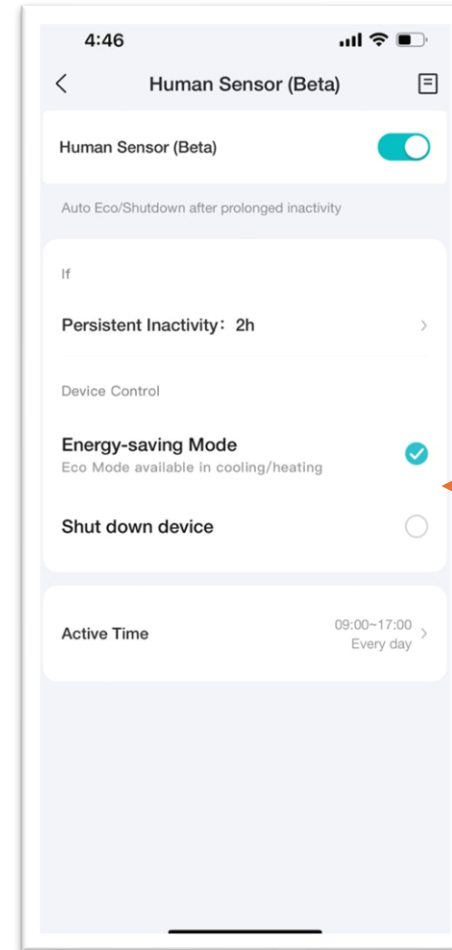


Swipe to turn on the sensor.

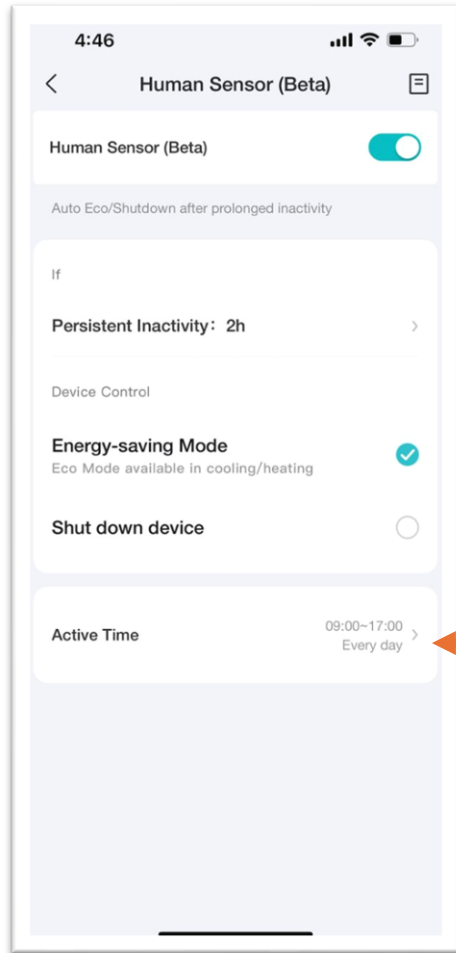
3. Do the setting.



Set the persistent inactivity duration.



Set the instruction you want the device do when persistent inactivity triggered.



Set the sensor active time.

9. Intelligent Scene



What is Intelligent Scene ?



Intelligent Scene is allowed you to create the scene follow by your instructions to make one/more IoT device(s) communicate with other IoT device(s) which you can achieve your smart life.

** For selected MOVON devices only.*

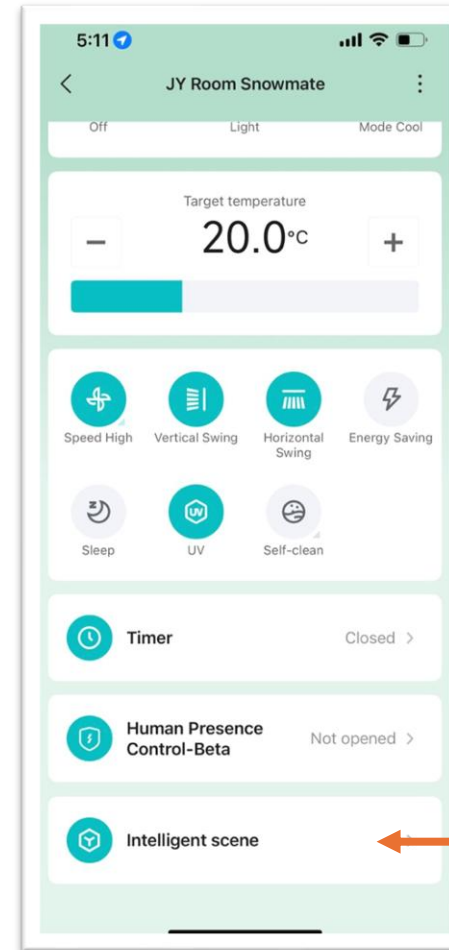
The intelligent scene selection/setting may vary or different by selected device.

1. Choose the device.



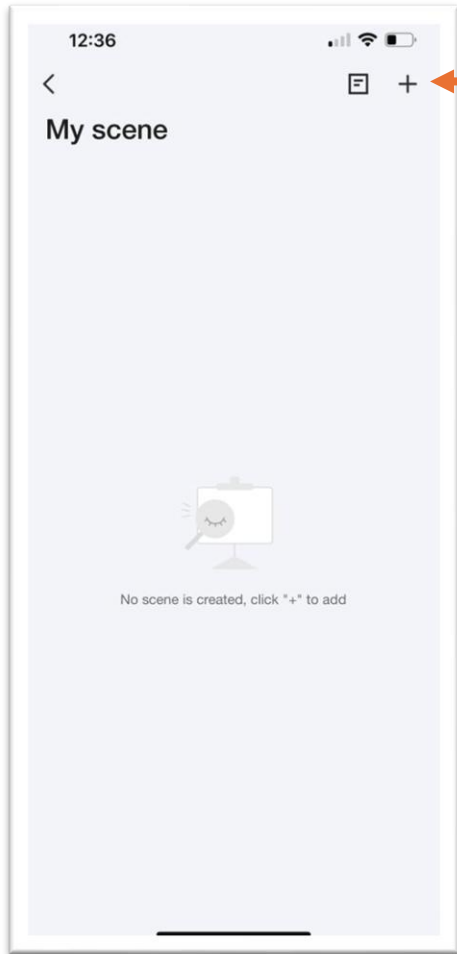
Click & choose the device.

2. Enter to Intelligent Scene page.



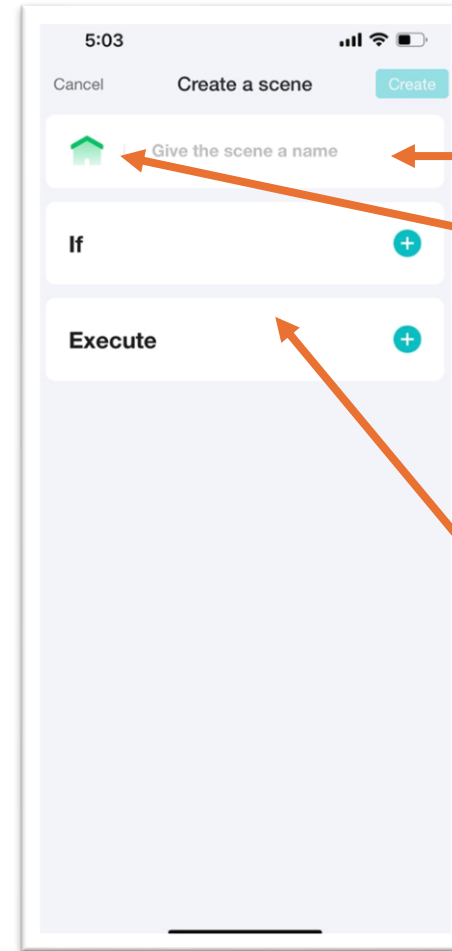
Click to go to Intelligent Scene setup page.

3. Create your scene.



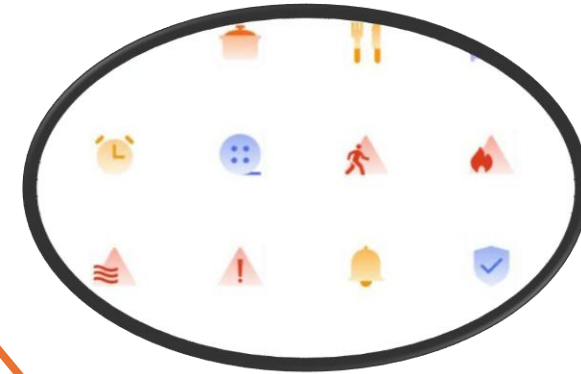
Click to create your scene.

4. Naming your scene.



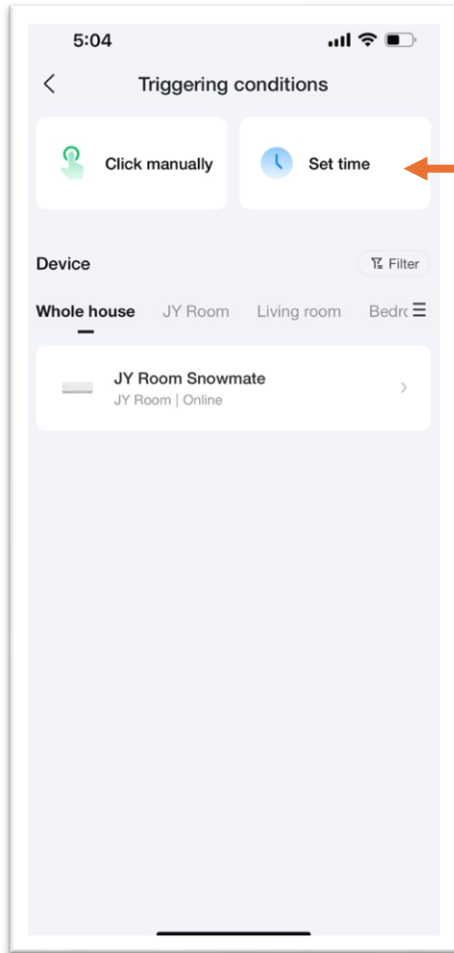
Give a name to your scene.

Select your favorite icon for your scene.

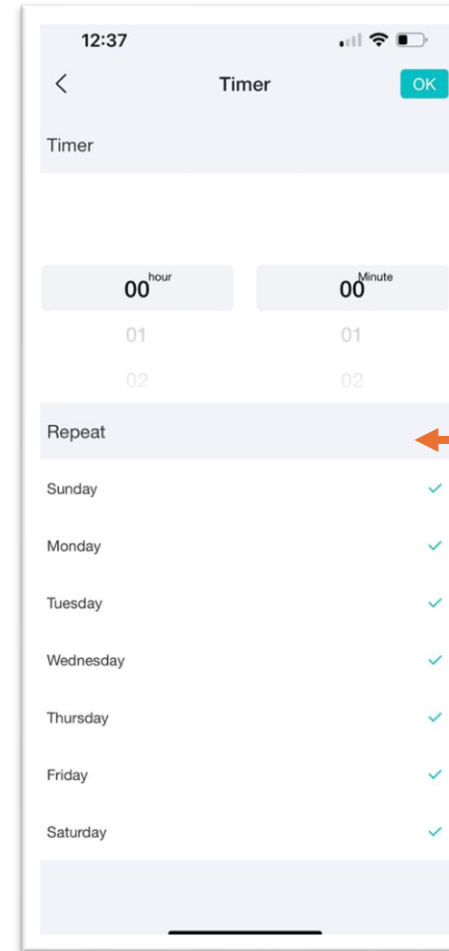


Click to set your condition.

5. Set your scene condition.

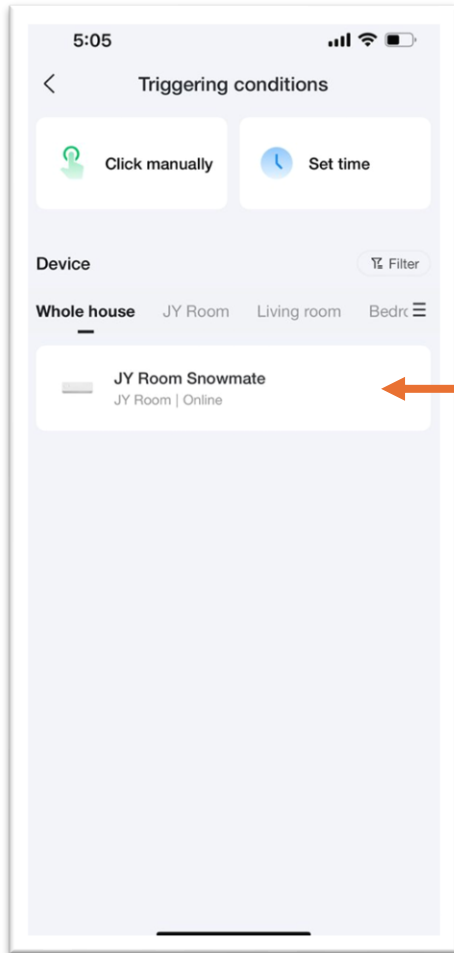


Set the time if you want.



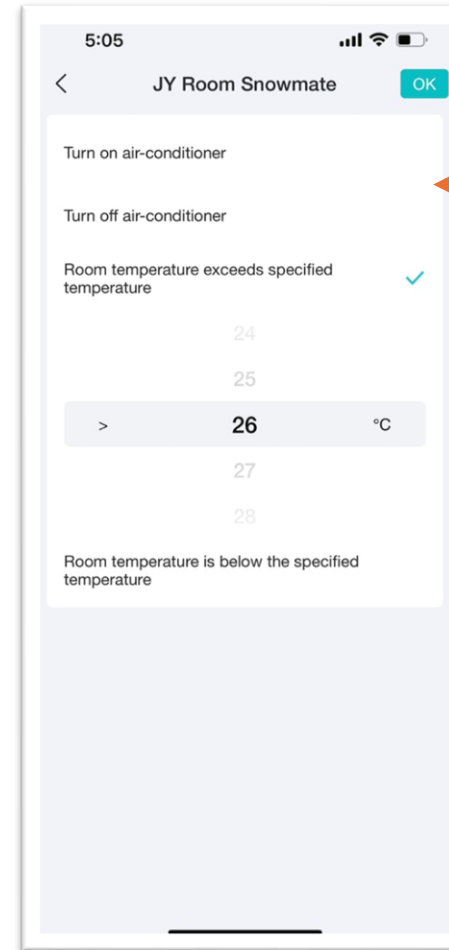
Set the day of week you want to repeat the scene.

6. Select device to set condition.



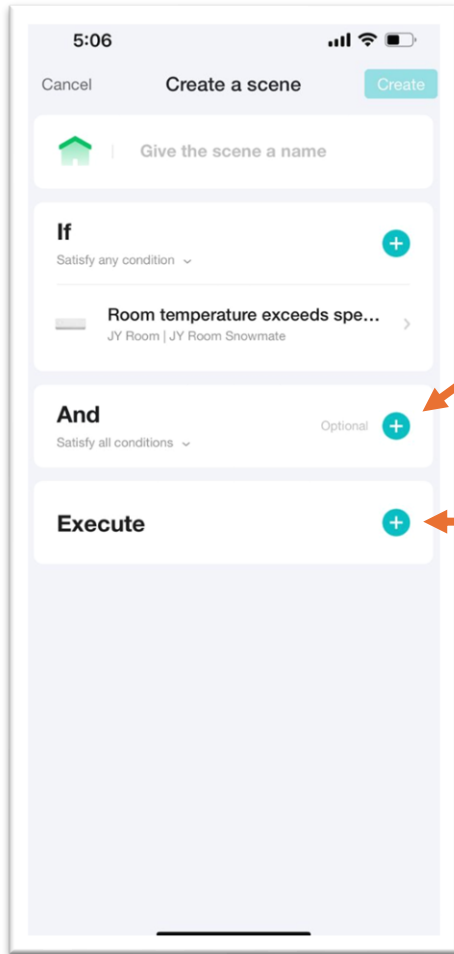
Choose the device you want to set condition of scene.

7. Choose the condition.



Choose the condition.

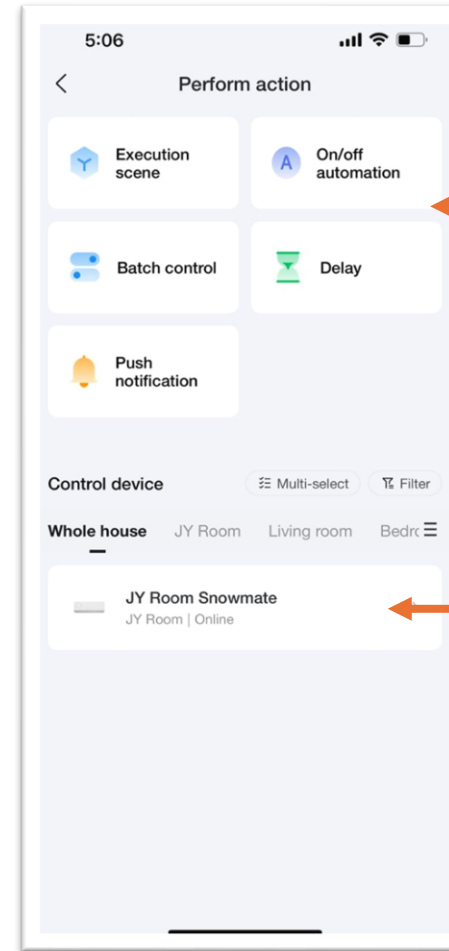
8. Set execute target & task.



If you have additional condition and criteria.

Click to set execute target & task.

9. Assign & setting up the task.



Action & setting for the task.

Select the target device and set the task.

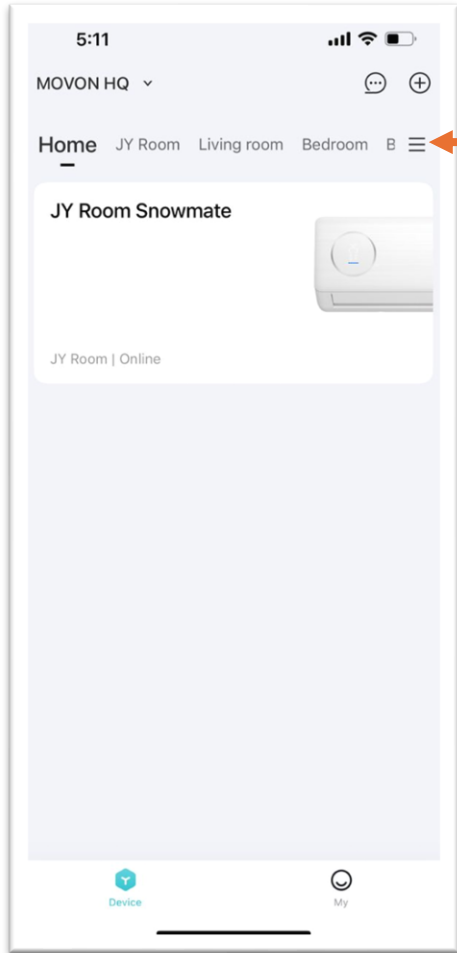
10. Room Management



Manage room is only allowed after you connected the device.

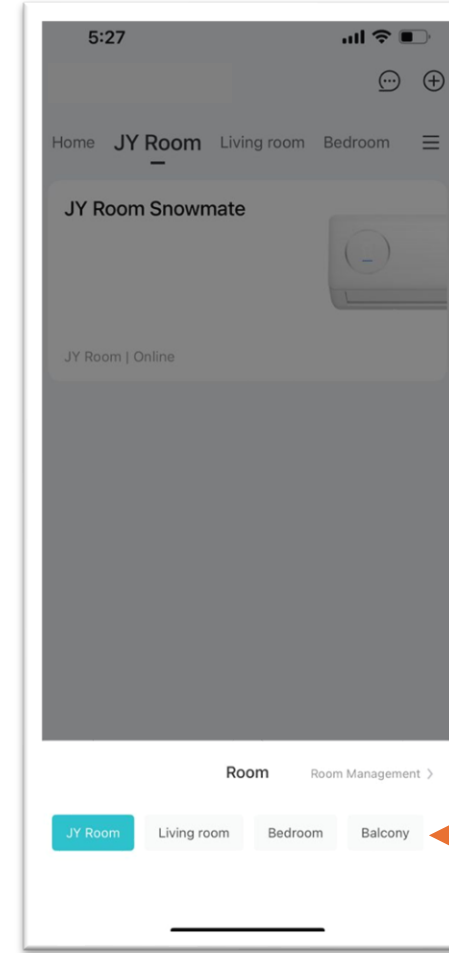


1. Go to manage room.



Click to manage room.

2. Choose your action.

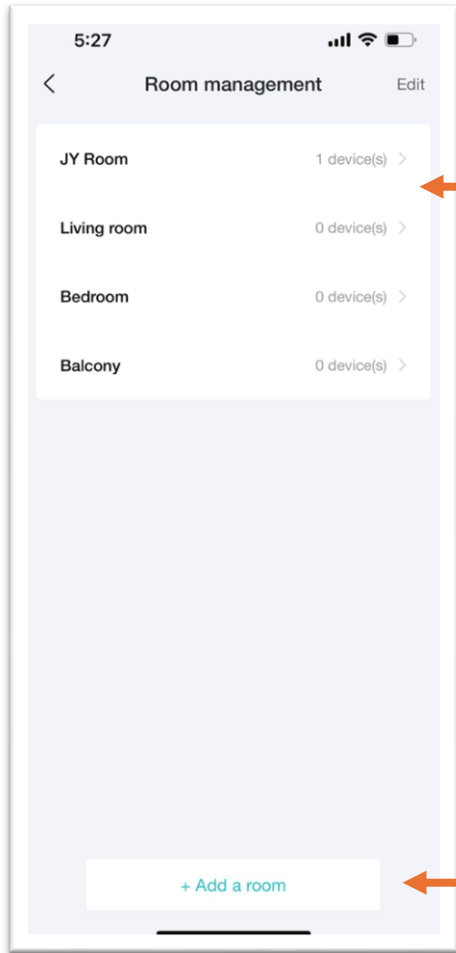


Add new room or move device.

Click to quick go to the selected room.

Manage room is only allowed after you connected the device.

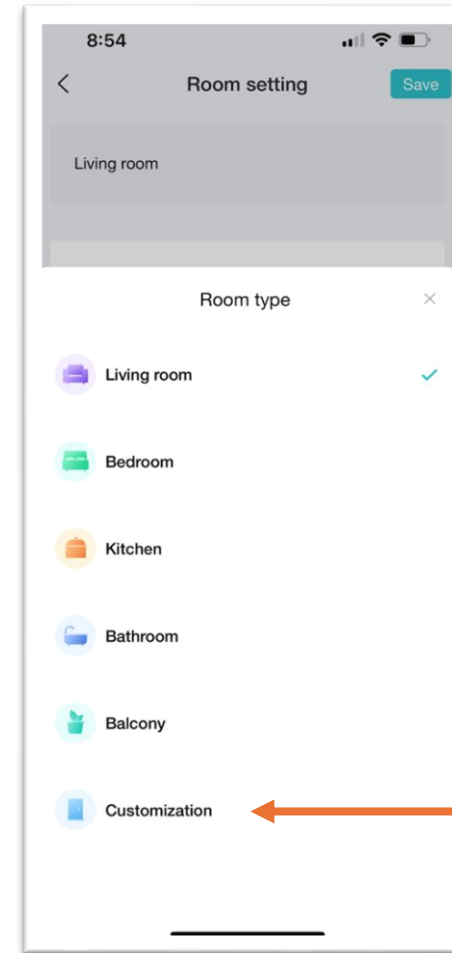
3. Select or add new room.



Select the room you want to manage or move device.

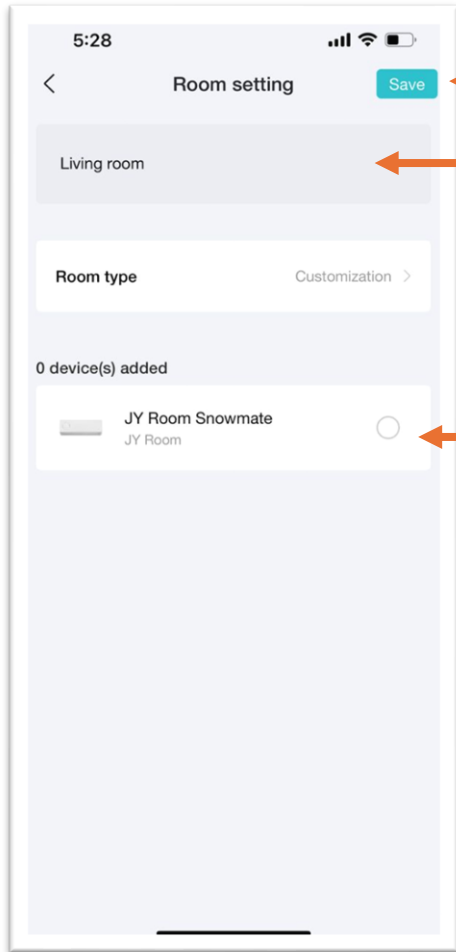
Click to add new room.

4. To add new room.



Click customization.

5. Add new room.

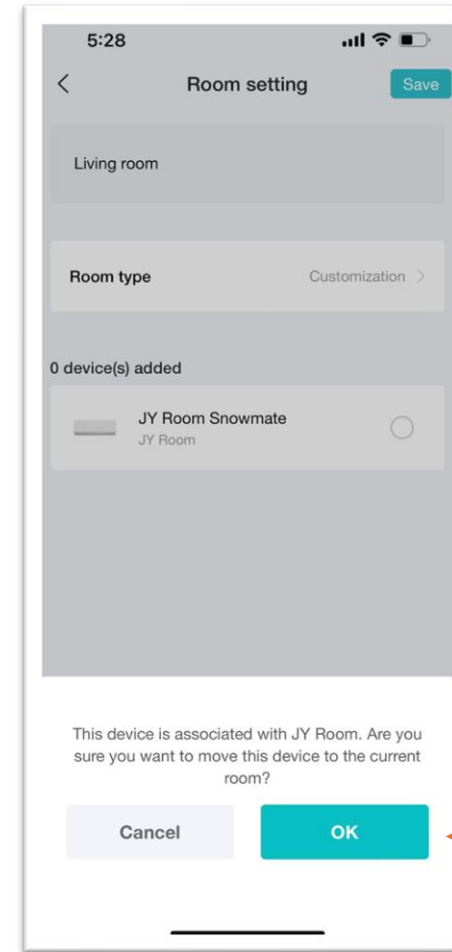


Click to save.

Key-in your room name.

Tick if you want to move the device to your new room.

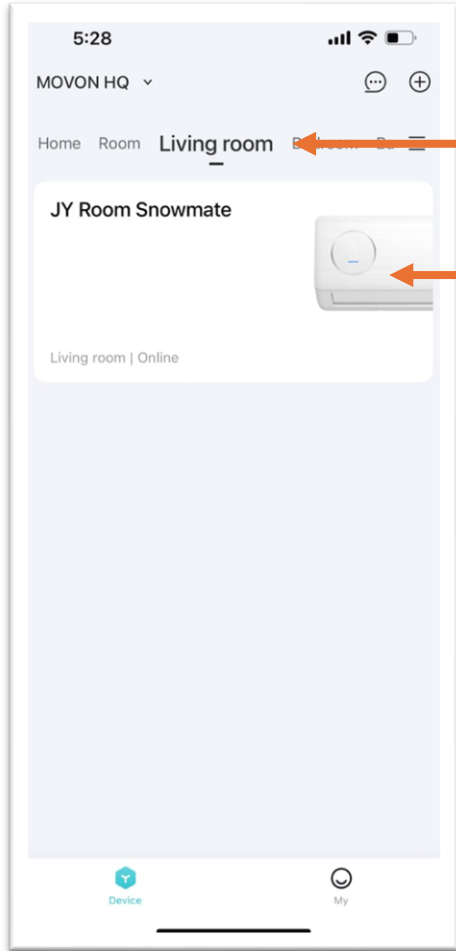
6. Move device to another room.



Click to confirm to move your device from one room to another room.

Manage room is only allowed after you connected the device.

7. New room created & device moved.



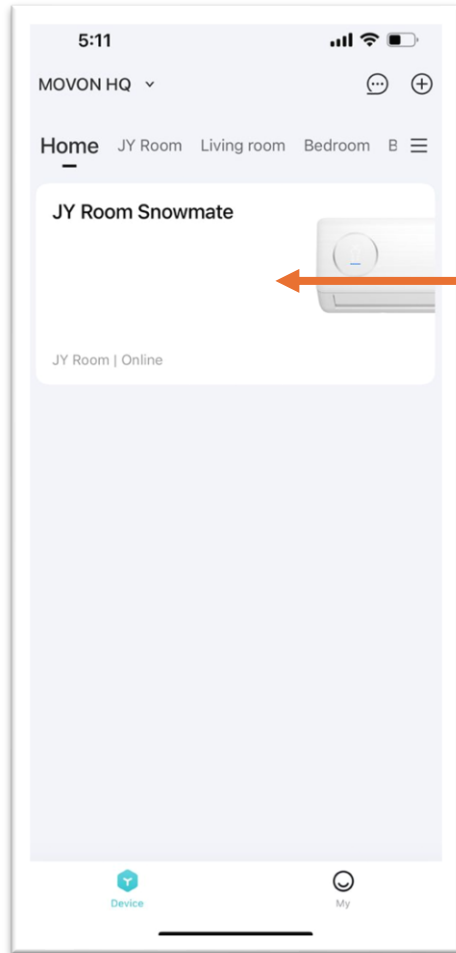
New room created.

Device has been moved to the room.

11. Firmware Updates

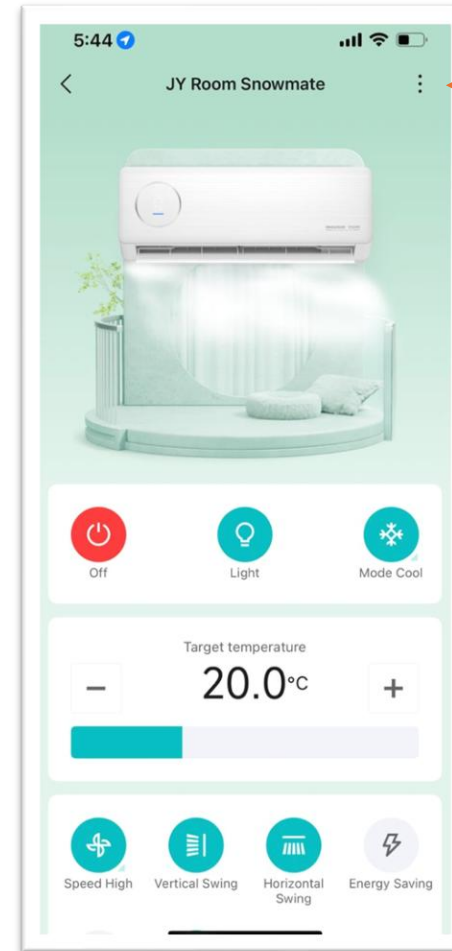


1. Choose the device.



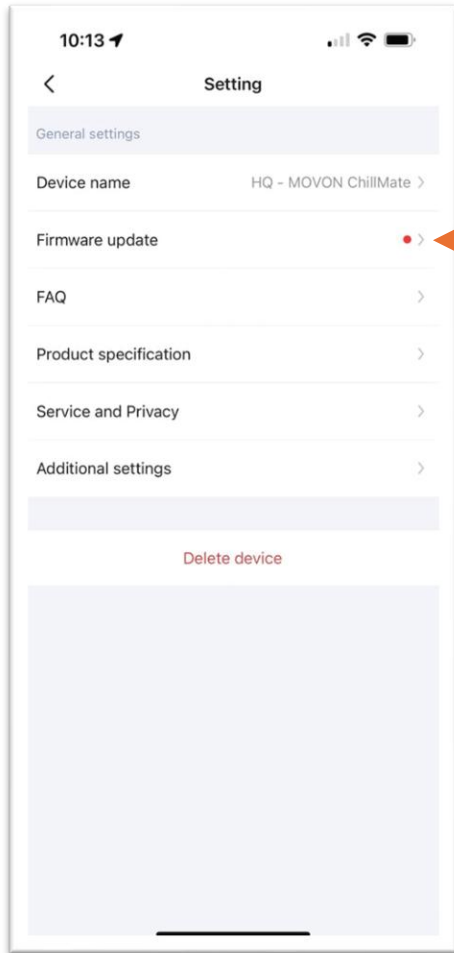
Click & choose the device.

2. Click more menu.



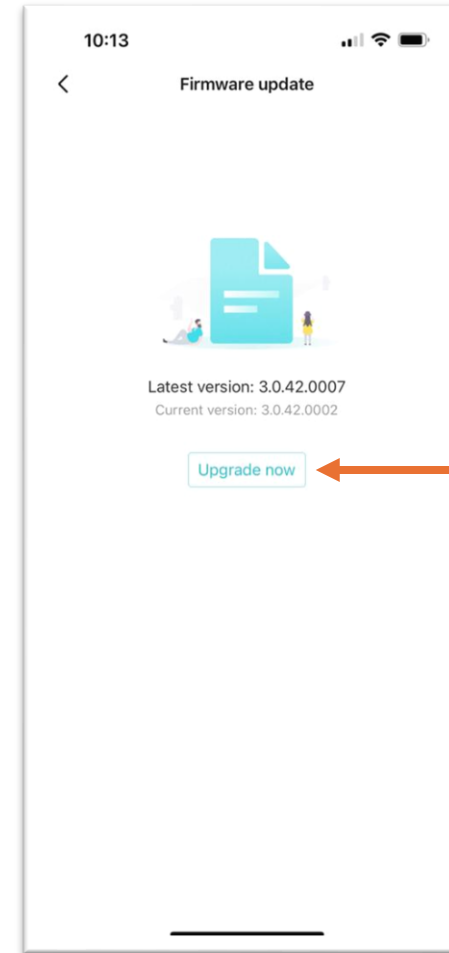
Click for more menu.

3. Check firmware update availability.



Check if firmware updates is available.

4. Update firmware.

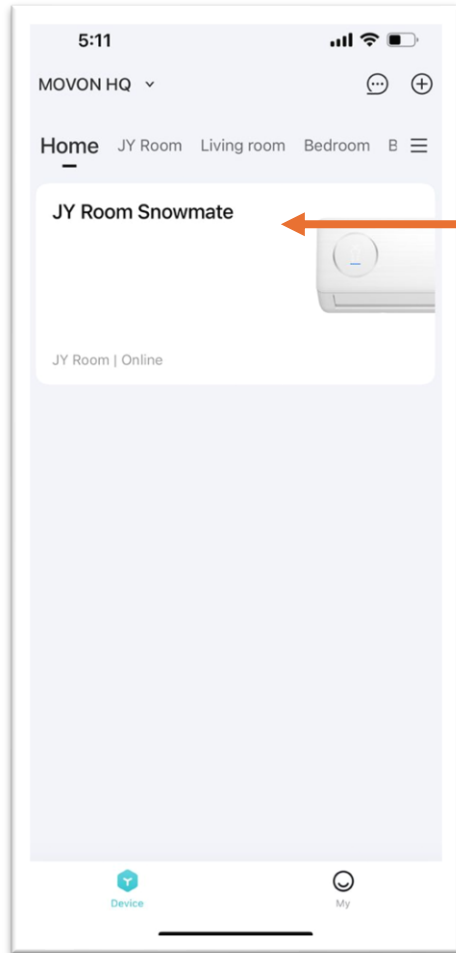


Click to update & upgrade firmware.

12. Others

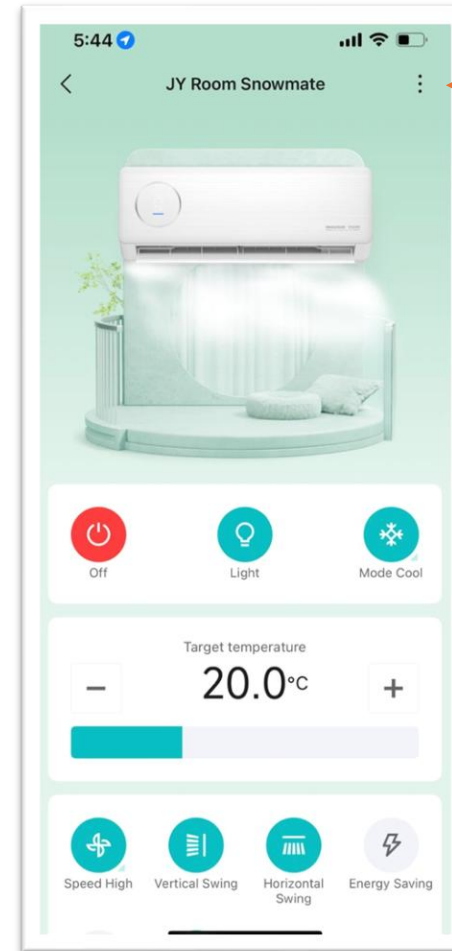


1. Choose the device.

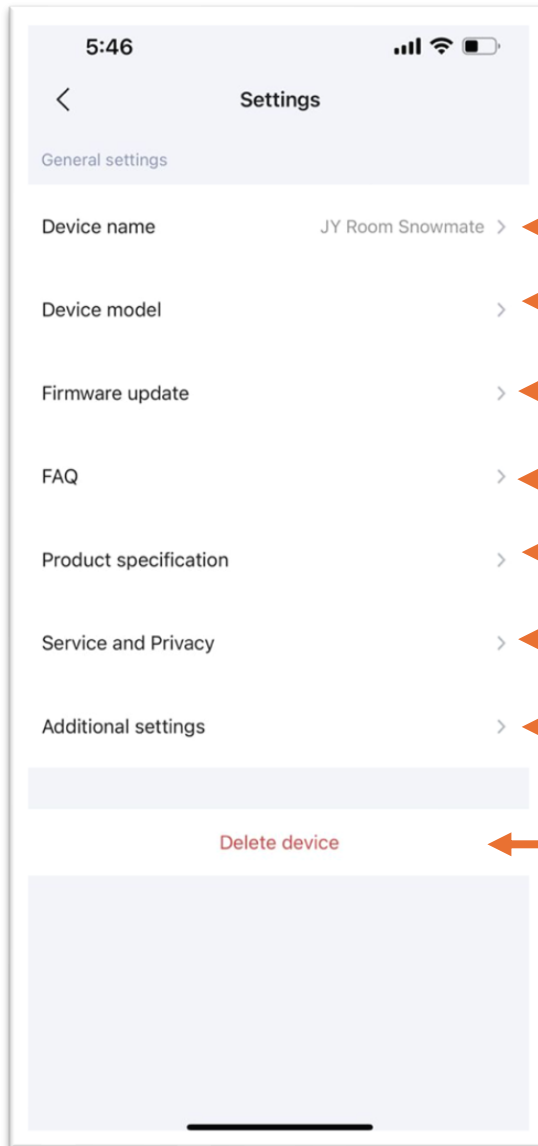


Click & choose the device.

2. Click more menu.



Click for more menu.



Click to rename your device.

Device model.

Click to check and update firmware.

Click to read FAQ.

Click to read product specification and product user manual.

Click to read mobile app service & privacy related info.

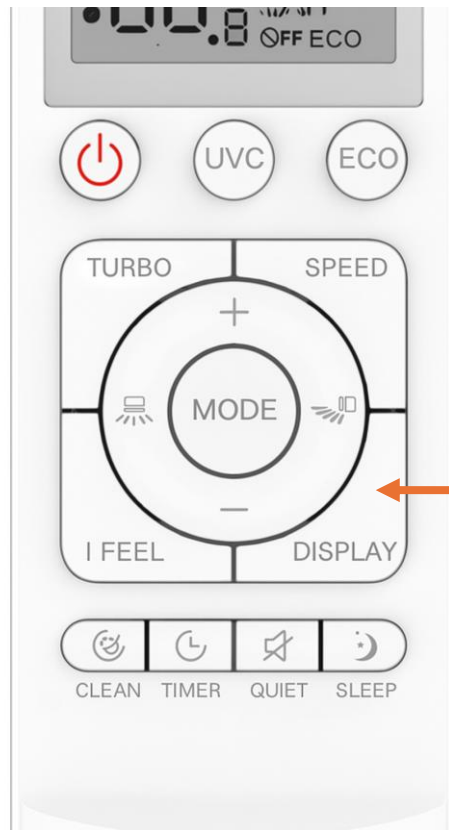
Click to see additional info.

To delete the device from your app.

13. Reset Wifi & Reconnect



1. Continuous press 6-times



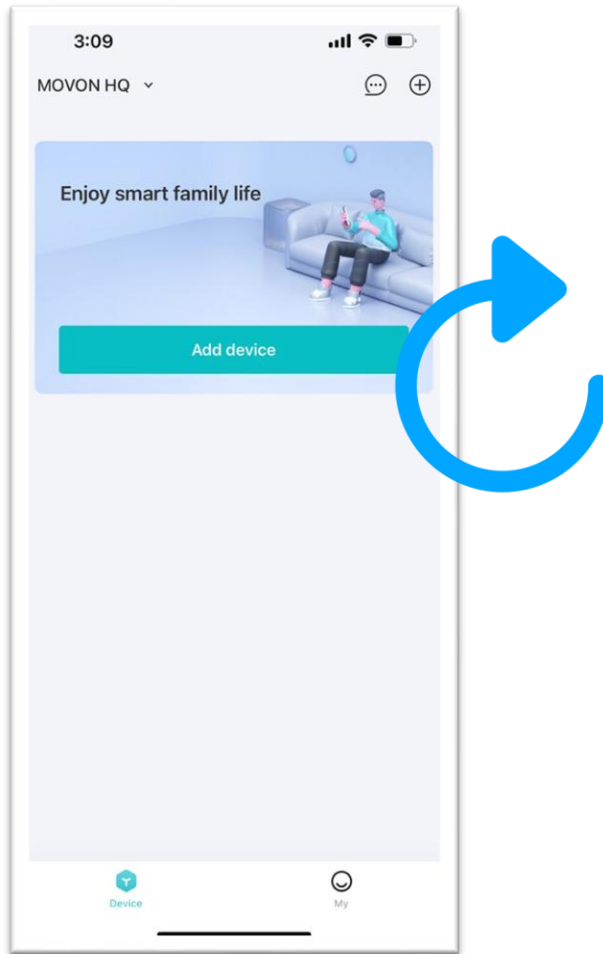
Continuous press **6-times** [Display] button from remote control.



* After you press 6-times on [Display] from remote control:

- i. You will hear the beep-beep sound ringing.
- ii. You will see the wifi icon is blinking on the device's embedded round screen display.

2. Re-do the add device steps.



-END- APP USER GUIDE

MOVON SnowMate 1.0Hp (V Series)

MOVON SnowMate 1.5Hp (V Series)